



Co-funded by the
European Union



german
cooperation
DEUTSCHE ZUSAMMENARBEIT

**PROJECT: EU4 Energy Transition
Covenant of Mayors in the Western Balkans and Türkiye**

Project Logical Framework Part 2


Daiva Matonienė
Project team leader, CPMA

02 July 2024

Implemented by

giz Deutsche Gesellschaft
für Internationale
Zusammenarbeit (GIZ) GmbH



A scenic landscape at sunset or sunrise. The sky is a mix of purple, blue, and orange. In the foreground, there are rocky, grassy hills. The quote is overlaid in white text.

**Attitude is a little thing that makes
a big difference.**

Winston Churchill



Funded by
the European Union



Structure of training

1. Short reminder theory: Logical framework. What is it?
2. Exercise: you are evaluators (6 Logical frameworks)
3. Overview of evaluation of Logical frameworks
4. Practical Horizon Europe project example
5. Tips and recommendations

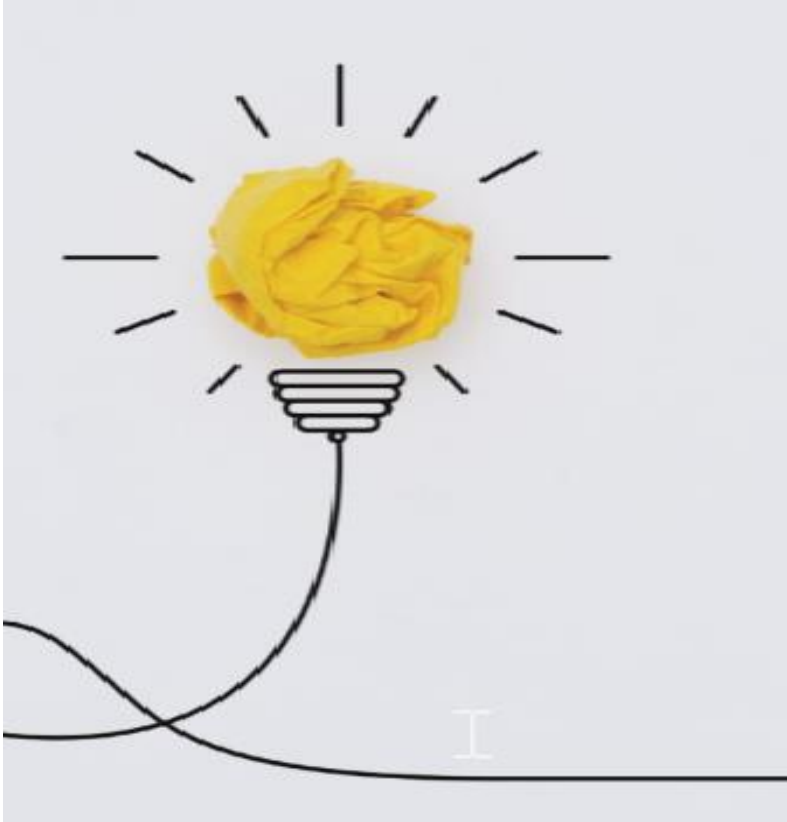




Funded by
the European Union



What is a Logical framework?



<https://www.youtube.com/watch?v=d0NPxGgGMtM>



Funded by
the European Union



What is a Logical framework?

A logical framework (or logframe) is **a management tool** that assists in project design by clearly stating the **key components**, how the project is expected to work and how success will be measured



The Logical Framework Approach (LFA) is an analytical process and set of tools used to support project planning and management.

According to the World Bank (2023), “the Logical Framework has the power to communicate the essential elements of a complex project clearly and succinctly throughout the project cycle. **It is used to develop the overall design of a project, to improve the project implementation monitoring and to strengthen periodic project evaluation”. It provides a set of interlocking concepts which are used as part of an iterative process to aid structured and systematic analysis of a project or programme idea (EUROPEAN COMMISSION).**



How you will start with the goal or the activities?

Logical Framework (Logframe) Template

	PROJECT SUMMARY	INDICATORS	MEANS OF VERIFICATION	RISKS / ASSUMPTIONS
Goal				
Outcomes				
Outputs				
Activities				

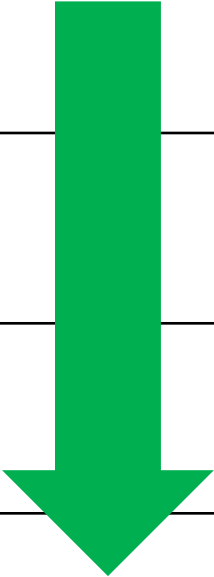
Top down

Bottom up



The Logframe Matrix

First step: Top-Down

Project Structure	Project summary	Indicators of performance	Means of verification	Risks and Assumptions
Goal				
Outcomes				
Outputs				
Activities				



Funded by
the European Union

The Logframe Matrix



Second step: Work Across

Project Structure	Project summary	Indicators of performance	Means of verification	Risks and Assumptions
Goal				
Outcomes				
Outputs				
Activities				



Third step: bottom - up

Project Structure	Indicators of performance	Means of verification	Risks and Assumptions
Goal			
Outcomes			
Outputs			
Activities			

If (in the Activities cell), *then* (on the arrow between Outputs and Indicators of performance), and *and* (in the Risks and Assumptions cell)



Funded by
the European Union



When you writing project you must me

SMART

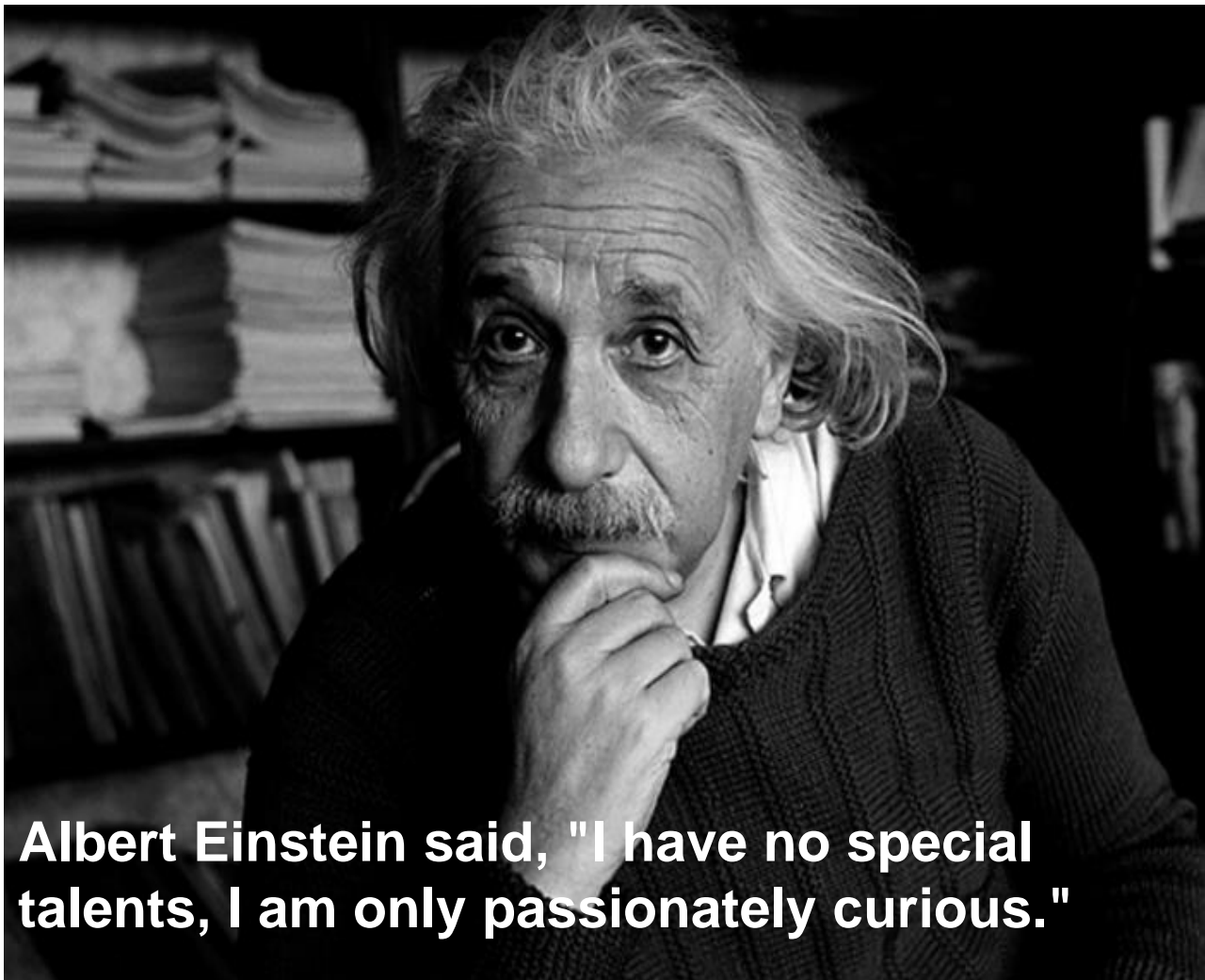
What I have in mind?



Funded by
the European Union



SMART Person



Albert Einstein said, "I have no special talents, I am only passionately curious."

- They are highly adaptable
- They understand how much they don't know
- They have great curiosity
- They're open-minded
- They have high self-control

When you writing project you must me

SMART



What I have in mind?

How related with logical framework?

Goals	Indicators	Verification sources	Assumptions
Purpose	Indicators	Verification sources	Assumptions
Outputs	Indicators	Verification sources	Assumptions
Activities	Resources	Means	Assumptions

THEN		IF
THEN		IF
THEN		IF
THEN		IF

SMART INDICATORS

SPECIFIC

The indicator should be focused on a specific aspect of the program or project

ACHIEVABLE

The indicator should be feasible, and not overly ambitious or unattainable

TIME-BOUND

The indicator should be measured at specific points in time to track progress towards the goal

MEASURABLE

The indicator should have a clear unit of measurement, such as percentages, numbers, or rates

RELEVANT

The indicator should be meaningful, and have a clear relationship to the program or project's intended outcomes

Evaluation exercise

6 logical frameworks

- No. 1.** Reducing the carbon emissions in Sports Complex
- No. 2.** To increase the energy efficiency of residential buildings in the city and to combat energy poverty.
- No. 3.** Promoting climate change adaptation, and disaster risk prevention, resilience, taking into account eco-system based approaches
- No. 4.** To increase the health and welfare levels of the citizens living there and to provide access to clean, renewable energy by transforming the buildings in a neighborhood where there is a socio-economically disadvantaged group that can be most affected by climatic risks in X district.
- No. 5.** Agrivoltaic Farming for Sustainable Agriculture and Energy Efficiency
- No. 6.** To increase social awareness by providing an application environment on sustainability, ecological awareness and clean food in X municipality





Funded by
the European Union

Evaluation exercise

6 logical frameworks



Mark about every that you liked and and finally on Slido will be ask to mark one the best from your point of you:

No. 1



No. 2



No. 3



No. 4



No. 5



No. 6.





What are the most common mistakes when writing project proposal?

1

Not evaluated and identified call

2

Not clear defining the problem

3

Not setting SMART objectives

4

Not writing clearly and concisely

6

Not following the guidelines and format





Funded by
the European Union



Tips and recommendations

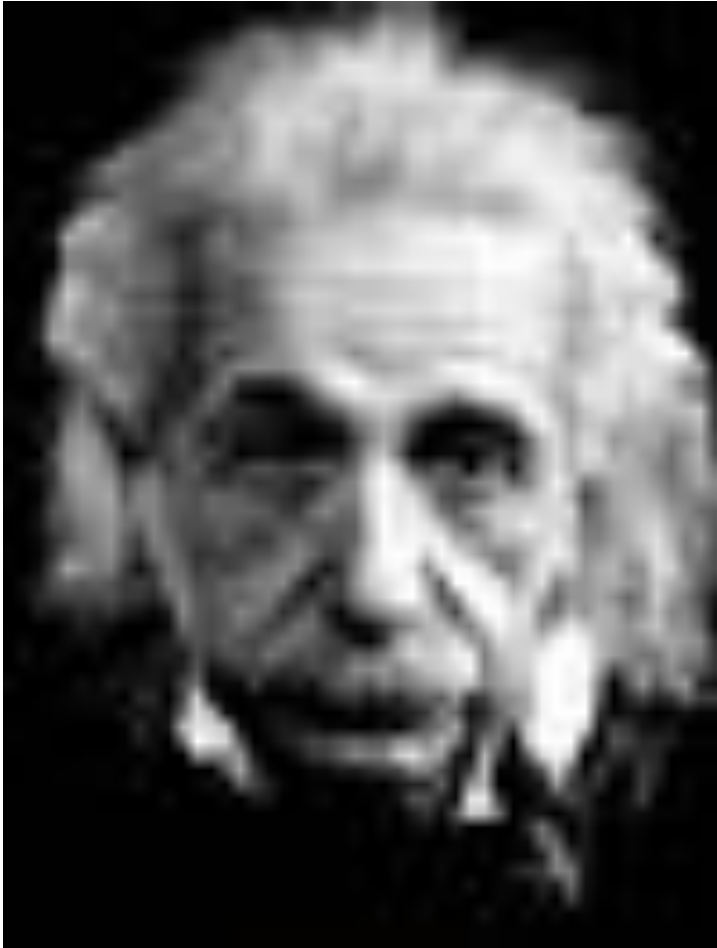




Funded by
the European Union



Simlicity is geniuous



“The definition of genius is taking the complex and making it simple.”

— **Albert Einstein**



Tips and recommendations

1. Follow instructions carefully
2. Use clear and concise language
3. Be specific about your objective
4. Conduct thorough research
5. Develop a realistic timeline and detailed budget
6. Be clear about what impact you hope to make with your project
7. Developing a clear monitoring plan, data collection
8. Be open to feedback



UPChapter.com

If you believe it
will work out,
you'll see
opportunities. If
you believe it
won't, you will
see obstacles.

~

Wayne Dyer



EU4ETTR PROJECT SOCIAL MEDIA ACCOUNTS



*EU4 Energy Transition: Covenant of Mayors in
Western Balkans and Türkiye*



EU 4 Energy Transition TR



EU4ETTR Project



EU4EnergyTransitionTR (EU4ETTR)