



Funded by
the European Union



Climate Adaptation Workshop

PROF. DR. TUNCER DEMİR

Urban Adaptation Guide: Practical Adaptation Actions to Mitigate Adverse Effect of Climate Change in Urban Areas

26.07.2024
ANTALYA



Funded by
the European Uni

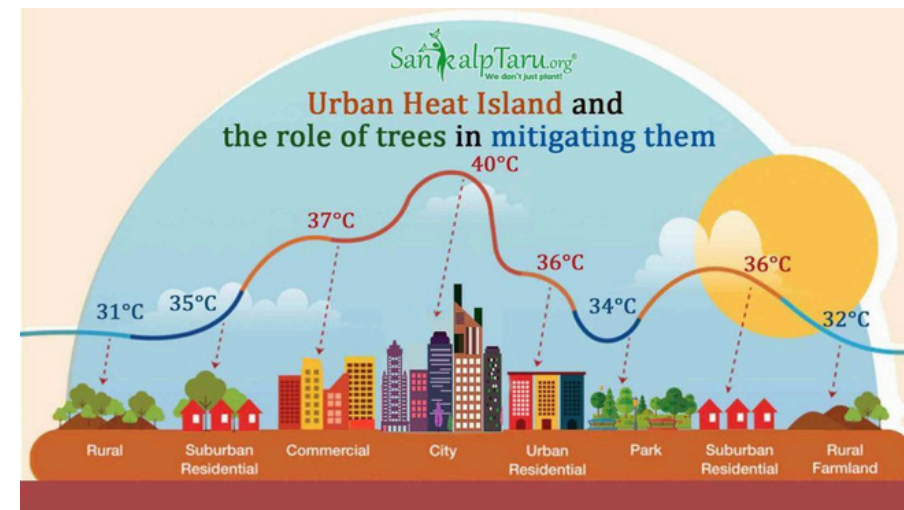
4.2 Heat island of the effect Reduction Practical Tips for:

4.2.1 Practical Tips for Individuals

Cool Your Roof: If you are a homeowner, consider installing a cool roof with high solar reflectivity to reduce heat absorption. Look for reflective coatings or white roof membranes.



- **Plant Trees and Green the Environment:** Plant trees and other plants around your home to cool your environment by providing shade and transpiration. If possible, create a green roof over your shed or garage.





Funded by
the European Uni



- **Reduce Heat Production:** Minimize heat production by using devices strategically during peak hours, keep curtains closed on sunny sides.



- **Hydrated and Cool:** Drink plenty of water and stay cool in hot weather by wearing loose-fitting clothing and taking cool showers or baths.



- **Raise Awareness:** Educate family, friends, and neighbors about the urban heat island effect and simple actions to reduce it.

1. Practical Tips for Municipalities

Cool Roofs and Green Roofs:

- Implement building codes or guidelines that encourage cool roofs.



Funded by
the European Uni

3



- Encourage green roof installation through tax credits, grants or other financial programs .

Urban Greening and Tree Planting:

- Develop urban greening plans and prioritize tree planting initiatives.
- Allocate resources for tree planting and collaborate with community organizations .
- Involve citizens in tree planting campaigns.

Heat Resistant Urban Design:

- Integrate heat-resistant design guidelines into urban planning regulations.
- Provide incentives or grants to developers who include heat-resistant features in new construction.
- Use light-coloured materials for sidewalks, integrate shade structures and optimize building orientation in urban design projects.

Heat Adaptable Building Standards:

- Enforce and update building codes to ensure new construction and renovations meet thermoadaptive requirements.
- Offer incentives or support programs that encourage building owners to renovate existing buildings with energy-efficient and heat-resistant technologies.

Public Participation and Education:

- Develop educational materials, conduct workshops, and organize community events on heat island effects and mitigation strategies.
- Collaborate with local schools, neighborhood associations, and environmental groups to involve the community in heat resilience initiatives .



Funded by
the European Uni



Data Monitoring and Analysis:

- Invest in heat monitoring infrastructure.
- Establish partnerships with universities, research institutions or private companies to conduct data analysis.
- Use data to inform decision-making processes, target interventions, and evaluate the effectiveness of heat mitigation actions.
- following these tips , both individuals and municipalities can contribute to reducing the urban heat island effect and creating cooler, healthier cities.



**Funded by
the European Uni**

4.3 CASE STUDIES

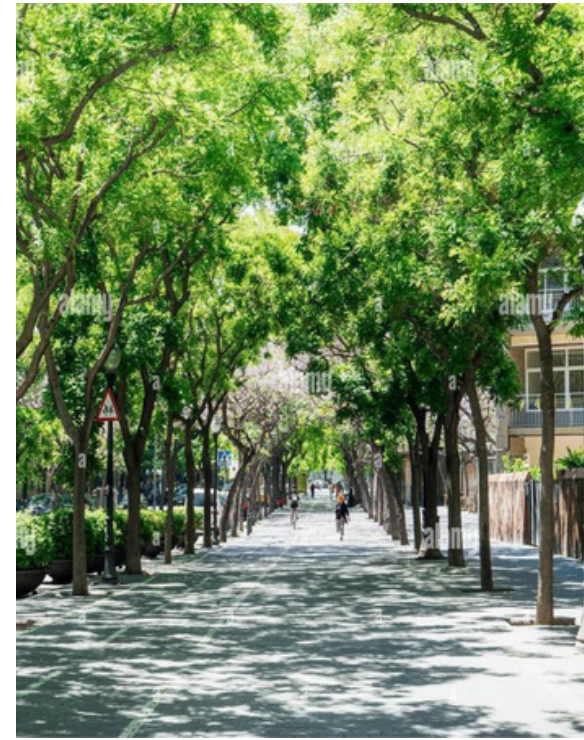




Funded by
the European Uni



4.3.1 Barcelona Trees : In a Warming City A Refreshing Oasis





Funded by
the European Uni



- Barcelona , ascending temperatures And decreasing with rains together more chic seen hot weather waves Andwith droughts double threatening under . These difficulties are busy urban residential layout because of it gets more intense And the heat imprisoning .
- this situation response as , Barcelona sustainable urban development about leader being in his determination . city , urban the environment cooling to your power owner tree planting And management prioritized in case . trees , two way natural air conditioning function sees :

Shadow : Tree shadow surface their temperatures drops Andespecially Summer in the months residents scorching from the sun protects .

Transpiration : leaves , transpiration by This vapor releases And This evaporation by the environment It cools down . Moreover Trees sun your light reflecting general temperature reducesit even further .

Climate over benefits beyond , trees A lot Another advantage presents :

Air Purification : Removes air pollutants they absorb air the quality They heal .

Carbon Capture : Trees , large a greenhouse gas the one which... carbon dioxide warehouses .

Noisy Decrease : leaves , noise pollution reducing sound barrier function sees .

Habitat Formation : trees , urban wild life for One shelter provides biological encouragement it does . diversity

Aesthetic Environment : Urban trees , more aesthetic And livable One environment creates .

- Barcelona's Green Infrastructure And Biological Variation Plan of the city throughout green fields each other to bind aims . Tree Master Plan (2017-37), tree cover up increasing And available of trees its durability increasing your actions by detailing This target It is compatible . **These actions those includes** :
- to heat And to drought resistant tree types to stitch .
- More strong One urban forest create for tree types diversify .
- for irrigation rain juice to use .
- This waste of to reduce for automatic irrigation systems to apply .



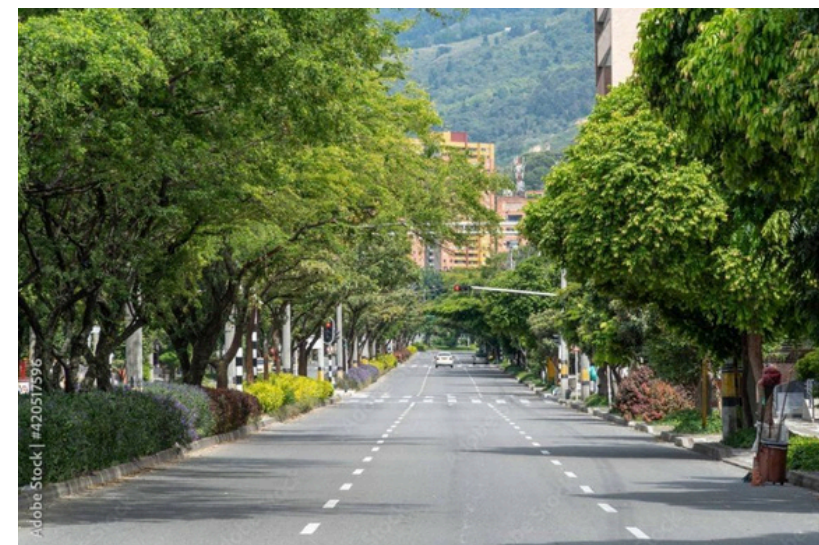
Funded by
the European Uni



Person per falling annoyed green to the field although , barcelona , most Europe from the city more more street to the tree has . This commitment made Barcelona changing in climate sustainable development for become a model brings .

4.3.2 Medellín , Colombia : A Cooling City with Green Corridors

Medellín , Colombia is a shining example of how urban planning can combat rising temperatures. Here is a more detailed look at the successful Green Corridors project :





Funded by the European Uni



Project :

- City across strategic aspect construction 36 green corridor .
- Eighteen corridor big ways follow-up by shadow provides And from asphalt radiating the heat reduces .
- Other eighteen corridor This their ways follow-up by natural drainage back it makes money And surrounding the weather It cools down .
- More than 36 hectares of land were transformed into green areas

Former appearance



Next appearance



Effect:

- green corridors around in areas temperature up to 4°C fell down detection has been made .
City throughout average heat Only fly year It decreased by 2°C in .
- It's just with comfort relating to was not ; to temperature connected in diseases important One reduction happened .
- Air pollution has also decreased, thanks to plants filtering pollutants such as PM2.5 and ozone

Environmental Your benefits Beyond :

- cheonggyecheon restoration project , neglect has been One area by reviving residents And tourists for popular One destination into brought .



Funded by
the European Uni



- Hallway , walking , cycling And leisure activities encouragement who makes live One public area into came .
- surrounding in areas real estate values It increased And project , maintenance And new job in tourism opportunities And economic activities encouragement did .
- Also , the corridor developed aesthetics And functionality , community the feeling strengthened .

Conclusion :

- of Seoul cheonggyecheon project , urban stream of restoration A lot directional benefits One is proof .
- Nature based on solutions prioritizing city , environmental your difficulties overcome came , people your health healed And more live And livable One urban area created .

This project serves as a model for other cities seeking sustainable approaches to urban development and heat mitigation.

4.3.3 Seoul , South Korea : Reviving a Stream , Cooling a City

A neglected waterway in Seoul, South Korea has been transformed into a vibrant urban oasis: the Cheonggyecheon stream restoration project. This innovative project demonstrates the power of nature-based solutions for urban heat reduction and environmental improvement.





Funded by
the European Uni

11



Project:

Cheonggyecheon Creek, once blocked by an elevated highway, has been opened and restored. More than 5.8 kilometers of improvements have been made on the Stream, creating a central corridor in the heart of Seoul.

The highway has been replaced with pedestrian paths, cycle paths and landscaped gardens. By introducing native plant species, a habitat for wildlife is created and its aesthetic appeal is increased.

Effect:

Studies reveal a significant temperature reduction of up to 5.9 °C in the stream corridor compared to parallel roads just a few blocks apart.

provides a more comfortable urban environment, especially during Seoul's hot summer months. The project has also improved public health by achieving a 35% reduction in small particle air pollution. Increased biodiversity has been observed, with an increase in plant, fish, bird and insect species.

Beyond Environmental Benefits:



Funded by
the European Uni



- The Cheonggyecheon restoration project has revitalized a neglected area, turning it into a popular destination for settlers and tourists.
- The corridor has become a vibrant community space, encouraging walking, cycling and leisure activities.
- Property values in the surrounding areas have increased and the project has stimulated economic activity through new businesses and job opportunities in maintenance and tourism.
- Additionally, the improved aesthetics and functionality of the corridor strengthened the sense of community.

In summary:

of Seoul The Cheonggyecheon project is a testament to the multifaceted benefits of urban stream restoration.

By prioritizing nature-based solutions, the city has tackled environmental challenges, improved public health, and created a more vibrant and livable urban area.

This project serves as a model for other cities seeking sustainable urban development and heat reduction.



PRACTICAL TIPS FOR COMPLIANCE WITH PUBLIC HEALTH

5.2 Public health adaptation Practical Tips for :

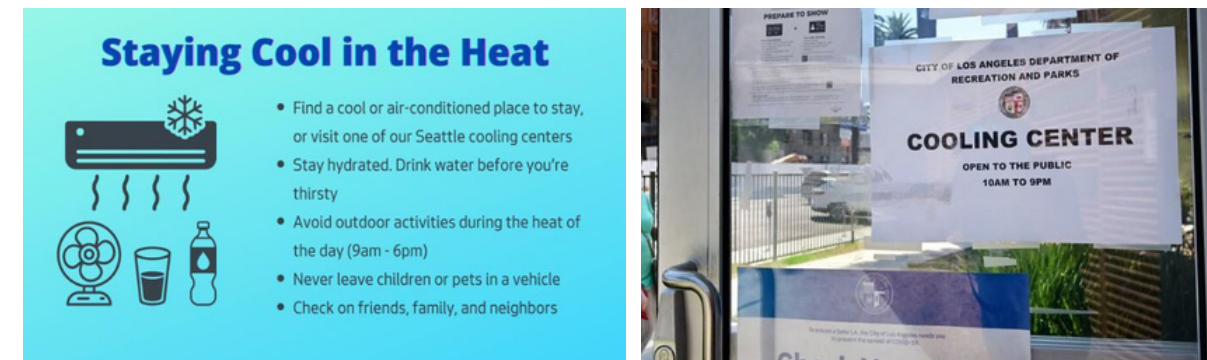
5.2.1 Individuals

5.2.1.1 Hot Wave Management :

o Hydration provide : again available One This bottle carry And especially hot in the weather plenty quantity liquid consume .



Look for air-conditioned space: Visit public libraries, shopping malls, or cooling centers during extreme heat .



Wear loose and light clothing : Cover your head with a hat and wear sunglasses to protect from the sun . .



Funded by the European Uni



Plan your outdoor activities for cooler times of the day : Avoid strenuous activities during the hottest hours of the day.



5.2.1.2 Improving Air Quality:

Limit car use: Walk, bike or use public transportation whenever possible.





Funded by
the European Uni



Check air quality reports: Be aware of air quality levels and avoid strenuous outdoor activities when pollution is high.



Invest in air purifiers (optional): Consider using air purifiers indoors to improve air quality, especially for sensitive individuals.



5.2.1.3 Disease Monitoring and Response:

- **Practice good hygiene:** Wash your hands frequently and avoid contact with potentially infected people .





Funded by
the European Uni

- **Informed** : *Get vaccinated and follow public health alerts regarding disease outbreaks.*



- **Report suspicious symptoms**: *If you are experiencing possible symptoms of climate-related illnesses, seek immediate medical attention.*



5.2.1.4 Water and Food Safety:

- **Save Water**: *Use water efficiently and avoid unnecessary water use.*



•



Funded by
the European Uni

- **Store water properly:** Have a safe water storage plan in place for emergencies or interruptions in water supply.



Follow safe food handling rules: Wash fruits and vegetables thoroughly, cook foods to appropriate temperatures, and maintain proper hygiene in the kitchen.





Funded by
the European Uni



5. 2.1.5 Collaborative Partnerships and Stakeholder Engagement:

To stay informed: Follow reputable sources of information on climate change and public health.



Be an advocate for change : Support organizations working on climate change adaptation and mitigation efforts .



Participate in community initiatives : Join local initiatives addressing climate change and health issues





5.2.2 Practical Tips for Municipalities

5.2.2.1 Heat Wave Management:

- Develop temperature action plans: Issue temperature alerts and advisories to inform residents of potential health risks .



Establish cooling centers: Provide air-conditioned areas with access to water for vulnerable populations during heat waves.



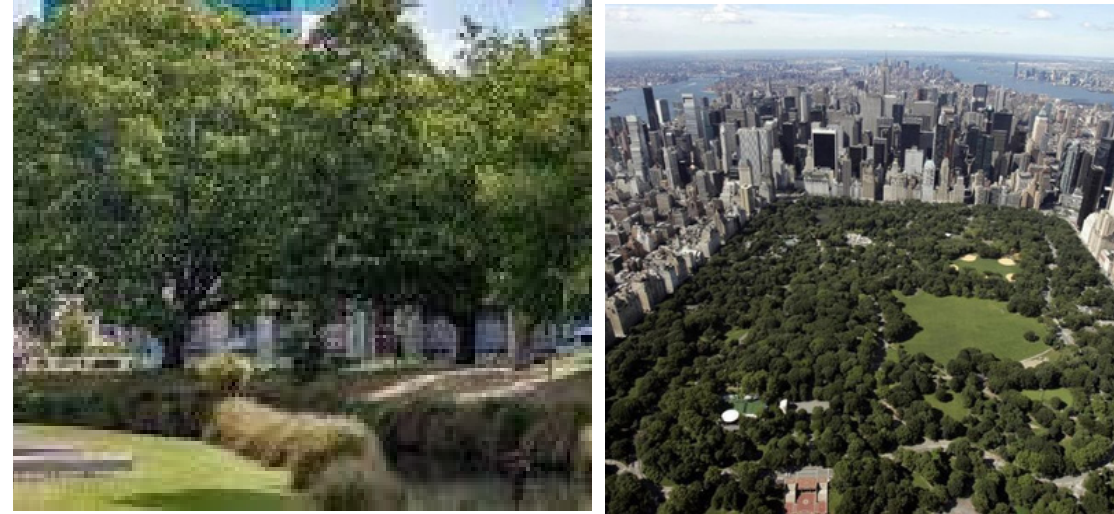


Funded by
the European Uni

20



- **Expand green spaces** : *Plant trees and create urban forests to provide shade and cool urban environments .*



- **Update building codes** : Promote heat-resistant building materials and designs that support natural ventilation.



ent Green Building Materials to Contemplate in Commercial

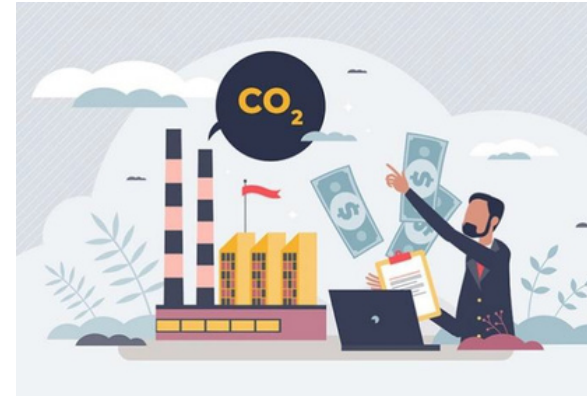


Funded by
the European Uni



5.2.2.2 Improving Air Quality:

Regulate emissions: Implement stricter regulations on vehicle emissions and industrial activities .



Promote clean energy: Invest in renewable energy sources such as solar and wind energy to reduce dependence on fossil fuels .



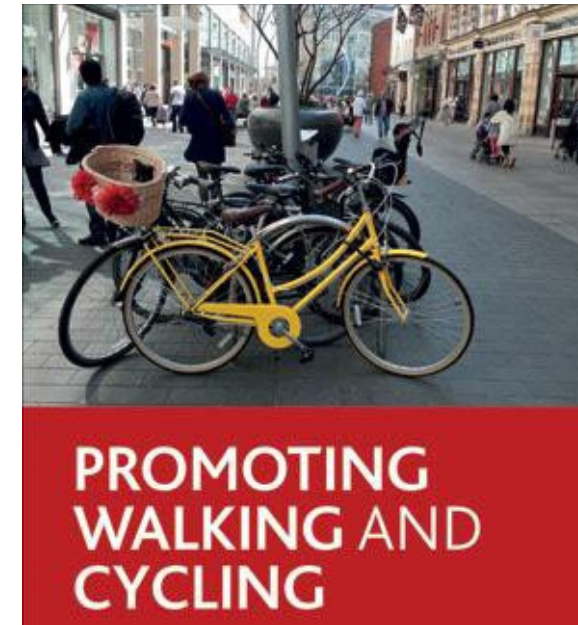
Expand green infrastructure: Create urban green spaces such as parks and green walls to act as natural air filters .



Funded by the European Uni

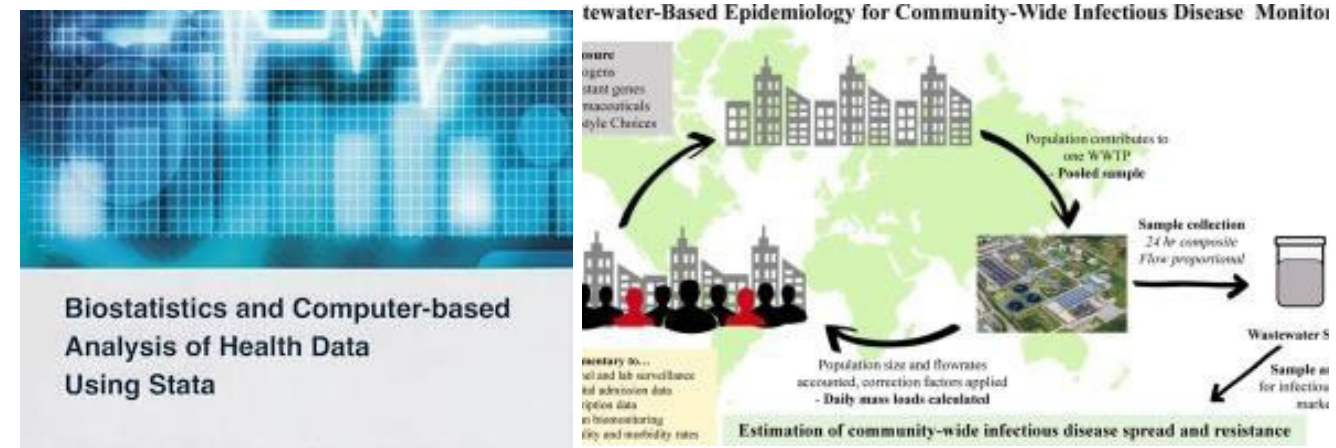


Promote Sustainable Transportation : Encourage walking, cycling and electric vehicle use through infrastructure development .



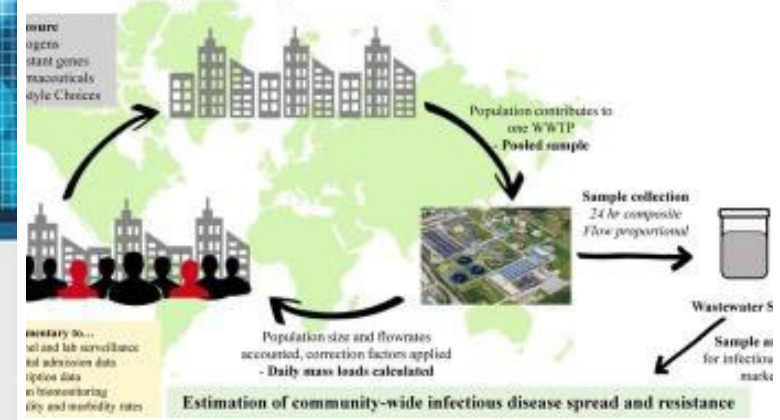
5.2.2.3 Disease Surveillance and Response:

Strengthen surveillance systems: Monitor disease trends and detect possible outbreaks early .



Biostatistics and Computer-based Analysis of Health Data Using Stata

Wastewater-Based Epidemiology for Community-Wide Infectious Disease Monitoring



Estimation of community-wide infectious disease spread and resistance



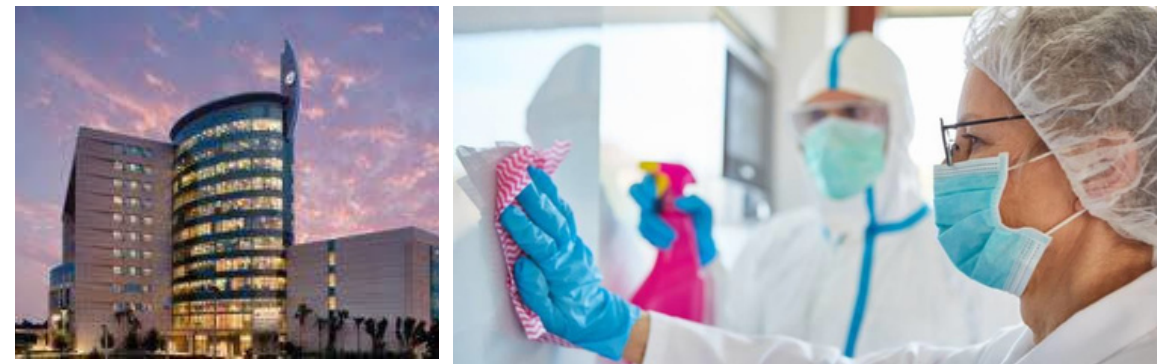
Funded by
the European Uni



Develop emergency response plans : *Implement rapid response and containment plans against climate-sensitive diseases.*



Improve public health infrastructure: Invest in health facilities, laboratories and trained staff to manage outbreaks.



Conducting Public Education Campaigns: *Raising awareness of climate-related health risks and preventive measures .*



Funded by
the European Uni



5.2.2.4 Water and Food Safety:

Improve water management: Invest in resilient water infrastructure to ensure safe and reliable water supply during extreme weather events .



Improve water quality monitoring: Monitor water quality implement treatment systems to address contamination risks . regularly and



Promote Sustainable Agriculture: Support local food production and sustainable farming practices .





Funded by
the European Uni



Develop food safety guidelines: *Establish regulations and guidelines for safe food handling and storage, especially during extreme weather events .*



5.2.2.5 Collaborative Partnerships and Stakeholder Engagement:

To foster collaboration: Partner with public health agencies, community organizations, academia, and other stakeholders .



Share knowledge and resources: *Collaborate on knowledge sharing and capacity building initiatives .*

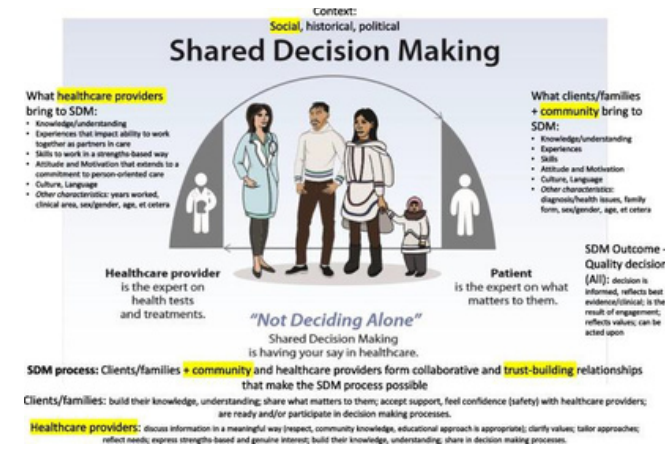




Funded by the European Uni



Involve vulnerable communities: Involve vulnerable communities in decision-making processes and ensure their needs are met.



Seek out funding opportunities : Partner with national and international organizations to provide resources for adaptation strategies.





5.3 Public Health Case Studies for

5.3.1 Open Skies, Healthy Lives: China's
Unexpected Health Benefits

Climate Action Leads to



in asia weather pollution heavy One way hanging stands , every year
claimed an estimated 2.2 million lives silent One join . A big economic strength
central the one which...this is china environmental barely opposite across
. However , China's climate with the amendment struggle their efforts
while examining positive One direction emerge turns out : the public in your
health important One recovery .



Funded by
the European Uni



Coming Air Pollution Threat :

- Across Asia, air pollution is a serious public health crisis. Studies estimate that nearly one-third of global deaths from air pollution (2.2 million per year) occur in this region.
 - Rapid economic growth in Southeast Asia is fueling increasing dependence on coal-fired power plants, a primary source of air pollution.
- This trend is predicted to worsen air quality and associated health problems. For example, Vietnam's planned expansion of coal power plants could lead to a tenfold increase in coal emissions, leading to an increase in respiratory diseases and other health complications.

The Power of Climate Action:

- Considering the health impacts of China's commitment to combating climate change, a surprising benefit emerges. Studies reveal a strong link between moving away from fossil fuels and improved public health.

suggests that achieving China's Nationally Determined Contributions (NDCs) – its commitment to reduce greenhouse gas emissions – could provide health benefits that offset 18-62% of the costs associated with mitigation efforts. In simpler terms, health improvements translate into significant cost savings.



Funded by
the European Uni



China's First Success:

- China has already demonstrated its commitment to climate action by exceeding some of its NDC targets ahead of schedule. They targeted a 40–45% reduction in energy intensity (energy consumption per unit of economic output) by 2020 compared to 2005 levels. Remarkably, China achieved a 47% reduction by 2018, with a significant reduction (5.1%) in 2017 alone.

Reaping the Rewards of Clean Air:

- Current and projected health and economic benefits from climate action are primarily driven by improved air quality. Cleaner air means fewer respiratory illnesses, heart disease and other health problems associated with air pollution.
- While all nations must do more to meet the Paris Agreement goal of limiting global warming to 2°C, China's even greater emissions reductions are expected to deliver even greater health gains.
- Studies show that the net benefits of tighter emissions controls to reach the 1.5°C target would exceed the costs by three to nine times. In essence, health improvements would significantly offset the investments needed to achieve a more ambitious climate target.

Conclusion:

The significant health benefits associated with combating climate change provide a compelling reason for China and other nations to step up mitigation efforts. By moving away from fossil fuels and embracing cleaner energy sources, China is not only protecting the environment but also creating a healthier future for its citizens. This unexpected benefit serves as a powerful incentive for continued climate action and shows that a cleaner planet leads to healthier lives.



Funded by
the European Uni



5.3.2 . 3.2 Building Resilience, Going Green: Caribbean's "Smart Hospitals" Initiative



caribbean unique One barely opposite It's facing : Beautiful islands , what a pity that natural disasters , especially hurricanes And rising sea levels like climate of change triggered to disasters opposite is defenseless . This vulnerability is 67% vulnerable to disaster . inclined in regions found health to its facilities much extends . a disaster during damage seeing or destroyed One hospital , devastating to the results path can open And potential to 200,000 people much critical medical care access may not provide . Studies only 24 million in America more people in the last decade like this One with the situation opposite across staying guess it does .

"Smart Hospitals " Initiative : Health And Sustainability Win-Win for This is urgent need response as World Health Organization's Americas Region Office "Smart Hospitals " initiative started . This innovative program not only health facilities again construction to do beyond passing ; natural to disasters opposite their durability strengthening , changing to the climate rapport to provide helper is happening And environmental aspect sustainable applications encouragement it does . Basic concept It's simple : safe and the "



Funded by the European Uni



green " one hospital , real in the sense of a " smart " It is a hospital . Success
Story : British Virgin Adina Donovan House in the Islands

your initiative effectiveness real World in the examples clearly is seen .
Hurricane Irma in 2017 during heavy damage see British Virgin in the islands
old people for Adina Donovan House think . "Smart Hospitals " Toolset is both
safe and environmentally friendly . friendly One with facility resulting in again
to structuring guidance did . Basic improvements are :

- **Developed Durability** : More durable One roof , tornado in the strength of
to the winds can endure And extreme weather in the events residents can
protect .
- **Sustainable Applications** : Sun with panels unified energy thrifty lighting
And air conditioning systems , energy consumption And facility carbon foot
trace reduces . Similarly , low flowing This fixtures This use -most member
downloads. These measures important cost savings will provide And
facility energy 20-30% of your needs alone per sun with its energy will
meet guess is done .

Adina Donovan House, climate sensitive health services countless for the
benefit is an example . This approach is environmentally
sustainability encouragement while people health the results by
improving win win status presents . "Smart Hospitals " initiative ,
Caribbean of their country future for more resistant And sustainable
One health system How construction can showing One hope light task
sees .

from panic Preparedness : Bangladesh's Early Warning System Flood
Response transforming



Funded by
the European Uni

6.4 Effects of Floods and Floods Decrease Practical Tips for :

6.4.1 Individuals

6.4.1.1 Prepared Be :

flood risk know . of your region flood your past And evacuation regions
research . your family for evacuation ways And meeting including points to be
about One flood preparation plan improve .



6.4.1.2 Flood Insurance:

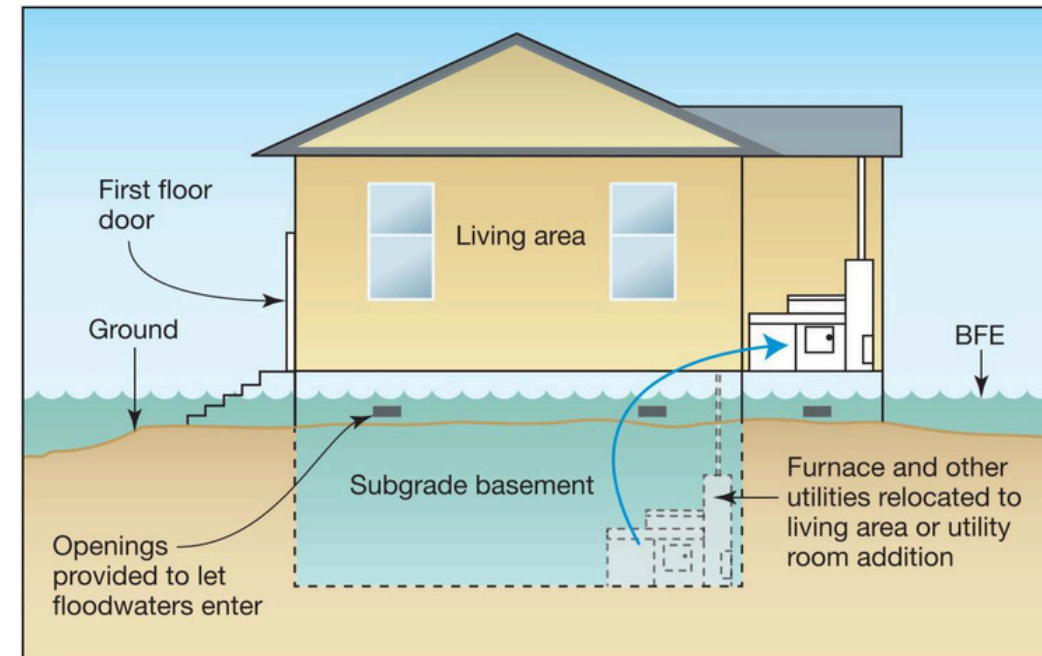
Consider purchasing flood insurance to protect your property from
financial loss in the event of a flood .





6.4.1.3 Flood Protection:

If possible, elevate your home or critical facilities above the expected flood level. Install flood gates and backflow valves to prevent water from entering your home.



6.4.1.4 Protect Your Belongings:

Store important documents and valuables in waterproof containers on higher floors. Move furniture and electronics to higher ground before a flood event.





Funded by
the European Uni



6.4.1.5 Stay Informed:

Monitor weather forecasts and flood warnings issued by local authorities. Be prepared to evacuate if necessary .



6.4.1.6 Help Others:

Help elderly or disabled neighbors who may need help especially during floods.

evacuating





Funded by
the European Uni

6.5 Practical Tips for Municipalities

6.5.1 Structural Precautions:

Floodwalls and Levees: Build barriers along rivers or around urban areas to prevent floodwaters from entering . .



6.5.1.1 Flood Control Channels:

Create channels to divert flood waters away from residential areas .





Funded by
the European Uni

6.5.1.2 Retention Ponds and Retention Basins:



Construct ponds or pools to temporarily store and slowly release excess water during heavy rainfall.

6.5.1.3 Flood Gates and Flood Barriers:

Install movable barriers at critical points to control water flow during floods.





Funded by
the European Uni



6.5.1.4 River Sewerage:

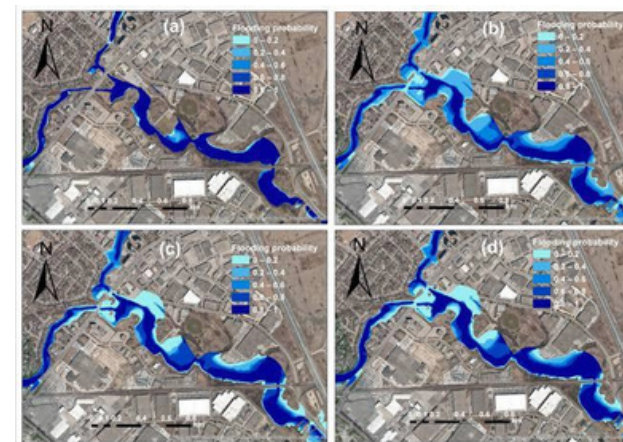
Modify river courses to improve flow capacity and reduce flood risks
(consider possible environmental impacts).



6.5.2 Non-Structural Measures:

6.5.2.1 Land Use Planning:

Implement land use policies that restrict development in floodplains and encourage green areas that absorb rainwater .





Funded by
the European Uni



1. Flood Plain Mapping and Early Warning Systems:

Develop accurate flood risk maps and implement early warning systems to alert residents.

2. Flood Insurance and Financial Incentives:

Promote flood insurance and provide incentives for flood-resistant construction measures.

3. Green Infrastructure:

Integrate natural features such as wetlands and rain gardens to manage stormwater runoff.

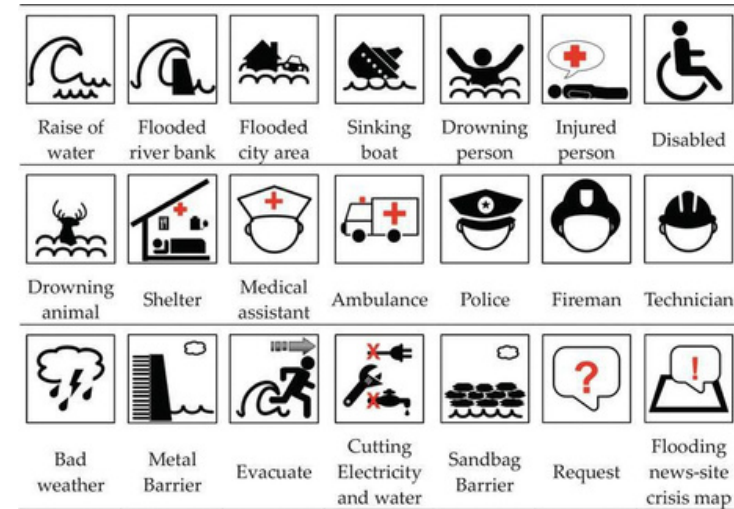




Funded by
the European Uni

6.5.2.5 Public Awareness and Education:

Conducting public awareness campaigns to educate residents about flood risks and preparations .



1. Disaster Response and Recovery Planning:

Develop plans for rapid responses to floods, including evacuation procedures and post-flood rescue efforts .

2. Urban Design and Building Standards:

Enforce building codes that require flood-resistant features in new construction .



Funded by
the European Uni



1. Public Participation:

- **Public Awareness Campaigns:** Launch campaigns to educate residents about flood risks and mitigation strategies .
- **Community Meetings and Workshops:** Hold meetings to discuss flood risks and gather community input on mitigation plans.
- **Volunteer Programs** : Establish programs for residents to participate in flood mitigation activities.
- **Citizen Science Initiatives:** Involve the public in flood-related data collection and monitoring.
- **Public-Private Partnerships:** Collaborate with businesses and NGOs to implement flood mitigation initiatives .
- **Flood Preparedness Programs:** Develop programs to provide residents with information and tools for flood preparation .
- **Feedback Mechanisms** : Create channels for residents to provide feedback and suggestions on flood mitigation.
- **School and Educational Programs** : Collaborate with schools to integrate flood awareness and preparedness into the curriculum .



Funded by
the European Union

- **Flood Insurance Information:** Provide information and resources about flood insurance options .
- **Showcase Successful Examples:** Highlight successful flood mitigation projects to encourage broader participation.

6.5.2.9 River Channel Management:

- Avoid construction within stream channels.
- Maintain the natural state of river beds .
- Minimize narrowing of stream channels.
- Build vents and outlets responsibly.
- Avoid unauthorized bridge construction.
- Prevent activities that restrict stream flow.
- Organize the removal of sand and gravel from streams.
- Implement planned urbanization that takes into account downstream conditions .
- Maintain connectivity between streams and floodplains .



6.5.3 Checklist for Structural and Non-Structural Adaptation Measures

Below is a checklist for Structural and Non-Structural measures that should be taken within the scope of a flood management plan prepared at international standards for local governments by Kadioğlu (2019).

Consider the use of natural functions and green infrastructure, such as wetlands and floodplains, to reduce the risk of flooding.

- *Explore methods to reduce peak runoff by implementing strategies such as releasing water slowly over time through infiltration, aquifer recharge, and rainwater harvesting.*
- *Incorporate applications such as green roofs, permeable asphalt, permeable pavement, and super and combined grids into the project to slow peak runoff.*

Ensure that floodwater traps such as on-site water storage, delay storage, inter-building storage, basement storage, and recreation areas are adequately incorporated into the project.

afforestation, terracing and other measures to preserve the natural vegetation and topography of floodplains and reduce the risk of landslides and flood disasters.

- *Implement flood traps, dams, ponds and dams in targeted areas to store flood waters, reduce flood velocity, flow rate, sedimentation and protect upper catchments.*
- *Have qualified personnel carry out regular inspection, repair, cleaning and maintenance of stream beds, rubble, waste, garbage cleaning, sediment and vegetation management and stream bottom dredging.*



Funded by
the European Union

- *Prohibit activities such as construction and infrastructure facilities that reduce the storage capacity of floodplains in areas where zoning is restricted .*
- *Make dry stream beds resistant to high rainfall and transform coastlines and the immediate surroundings into green areas.*

that could disrupt stream bed structures and significantly affect hydrology.

- *Ensure compliance with circulars on climate change and disaster measures issued by relevant authorities .*
 - *to cover sand, gravel, quarry and mine areas in an environmentally friendly manner and to prevent excessive water discharge during heavy rains through afforestation .*
- *Prevent clogging of stream beds and bridge abutments by properly managing and disposing of trees, plant material, excavation waste and rubbish .*

Rehabilitate streams that have been converted into open channels by building buildings, squares, roads and fields in stream beds . • Use Technical Bulletins and Flood Zone Building Regulations to ensure that construction materials used in flood risk areas are resistant to flood damage .

- *Develop and enforce standards, such as the Bridge Code, to prevent stream sections from narrowing and to ensure proper cleaning and maintenance of bridges .*
- *When sizing box culverts crossing streams, take climate change into account and consider any necessary adjustments.*



Funded by the European Uni

44

- *In ports, highways, etc. Address route changes or narrowings caused by culverts and ensure proper flow of storm water .*
- *Install drainage systems separate from sewage systems to collect and safely transport rainwater from roads and settlements and prevent it from damaging the environment.*
- *public education, awareness campaigns and risk communications tailored to the target audience .*





6.6 Case Study

6.6.1 Durability Created by : Bangladesh 's Flood Early Warning System



- Bangladesh , climate under the influence of the change concentrating One difficulty the one which... to the floods opposite continually One with struggle opposite is across . communities to protect for Bangladesh Red Crescent Association (BDRCS), both early warning systems and community to the preparation emphasis maker successful One flood management strategy has implemented .
- **A lot A Faceted Approach :**
- o Flood Shelters : BDRCS, flood events during temporary shelter to ensure for flood shelters construction has done .
- **Community Durability Programs :** communities with floods more Good start over to come out providing in programs active aspect place They receive .
- **Integrated Flood Resilience Program (IFRP):**
- o BDRCS of their work shiny One example , that at the moment four flood risk bearing in the region continue who makes IFRP . international in 2018 support started IFRP purposes are :



Funded by the European Uni



- **Community its durability Strengthen** : communities to the floods And other natural to disasters effective One way response to give for information And with resources equip . o Flood Early Warning System (FEWS): IFRP critical One component FEWS , losses -most member by downloading And their lives And livelihood resources protecting on time And TRUE flood alerts provides .
- **FEWS How Works :**
- FEWS , including to be about various stakeholders between work to the union It is based on :
 - o Community Disaster Response Teams (CORT)
 - o Community Disaster Management Committees (CDMC)
 - o Local Government Agencies
- This network four gradual One by process works :
- **Risk Assessment** : Data collection , community to the floods opposite their vulnerabilities to determine helper It is possible .
- **Tracing and Early Warning** : From weather stations And above flow from their communities incoming real timed data , flood risks guess to do And on time warnings to give for is used .
- **Distribution And Communication** : Warnings to households And down flow to their communities effective One way is transmitted .
- **Intervention And Capacity Development** : Evacuation plans , search And recovery teams And resistant housing construction , good coordinate has been One intervention to ensure for is prioritized . • Proven Activity :
- **IFRP consideration value One success has shown :**



- **Reduced Flood Impact** : 2019 flood disaster in program areas during of households about 78% still impressed . However , FEWS previous to the floods compared to assets And income on you impact important to the extent has reduced .

- **communities Empowerment** : To CORT volunteers early warning spreading , first aid And call And recovery like in areas given comprehensive education , communities proactive measures to take has provided .

Future A Model For :

- IFRP of FEWS success in Bangladesh other flood risk regions for One draft task sees . of this model copying , flooding their losses important to the extent decrease And climate change against permanent One society durability create to its potential has .

Important Conclusions :

- Bangladesh , comprehensive One strategy through flood risks active aspect hand is taking .
- of FRP FEWS , flood to the preparation aimed at society based on One your approach is an example .
- communities by strengthening And on time warnings by providing FEWS flood effects demonstrable way has reduced .
- This successful model, other flood risk under regions for valuable lessons offers .

• **6.6.2 Case Study (Urban Flood): Rotterdam, Netherlands**

- in Rotterdam, Netherlands found And urban floods to manage aimed at innovator with their approach known One is the city . of the city important



Funded by
the European Uni

One partial sea of the level under place from which the Rotterdam river floods And coast floods like two barely opposite is across . these problems hand to take for city various adaption And decrease precautions implemented :

- **Storm wave Barriers :**
- Rotterdam, iconic Including Maeslantkering to be about developed One storm wave barrier with the system is protected . This is moving barrier , two tower between hanging standing two big from the arm occurs . Storm waves during arms, sea of your water of the city This to their ways entering to obstruct for can be closed And like this coast to floods opposite protection provides .
- **Water Sensitive Urban Design :**
- city , urban to floods opposite its durability increase for into the water sensitive urban design principles adopted . These those includes :
 - **This squares And squares :** Rotterdam, busy downpour rains during more rain your water to collect And to store for designed open public fields created . These areas flow to reduce And This raid to prevent for permeable surfaces And place six storage systems with



Figure X. Water squares and squares



- **Green roofs and water-retaining pavements:** The city is encouraging the installation of green roofs, which absorb rainwater and reduce the load on drainage systems. Water-retaining pavements help slow water flow and prevent overload during heavy rainfall events.



Figure X. Green Roof and water retaining pavement

Water Storage and Retention:

Rotterdam has implemented measures to store and retain excess water, reducing the risk of urban flooding. These include:

- **Water storage areas and retention basins:** The city created designated areas that can store excess water during heavy rainfall and prevent it from overwhelming the drainage system. These areas can act as temporary reservoirs until the water is gradually released.
- **Floating urban developments:** Rotterdam has adopted the concept of floating structures, including floating parks and buildings. These structures are designed to rise and fall with changing water levels, reducing the risk of flooding and minimizing damage.



Funded by
the European Uni



Figure X. Floating parks and buildings in Rotterdam

Integrated Planning and Stakeholder Collaboration:

Rotterdam has adopted an integrated approach to urban planning, considering flood risk and resilience in all aspects of development. The basic elements are:

- **Climate proof regulations:** The city has integrated flood risk considerations into building codes and urban development regulations. New construction must comply with certain flood-resistant design standards.
- **Collaborative partnerships:** Rotterdam actively engages with stakeholders, including residents, businesses and water management authorities, to raise awareness, gather input and develop collective strategies for flood management and adaptation.

Adaptive Delta Management:

Rotterdam is part of the Dutch "Adaptive Delta Management" approach, a comprehensive strategy aimed at managing flood risks in the country. This approach recognizes that flood risk management is an ongoing process that must adapt to changing conditions, including climate change and urban development. It focuses on the ongoing monitoring,

evaluation and adjustment of flood



Funded by
the European Uni

protection measures to ensure their effectiveness over time. Water Resistant Neighborhoods:

Rotterdam has taken initiatives to create water-resilient neighbourhoods. These neighborhoods are designed to handle excess rainwater and reduce the risk of flooding. Measures include creating water squares, water squares and green areas that can temporarily retain and absorb rainwater. Additionally, buildings in these neighborhoods often include flood-resistant features such as raised entrances or water-resistant materials.

Blue-Green Infrastructure:

Rotterdam has adopted the concept of blue-green infrastructure, which combines natural elements with engineering systems to manage rainwater and reduce flood risks. This includes creating wetlands, urban ponds and green corridors that can act as natural buffers, absorbing rainwater and slowing its runoff. Blue-green infrastructure not only protects against flooding, but also increases the liveability and biodiversity of the city.

Making Existing Infrastructure Climate Resilient:

In addition to implementing measures in new developments, Rotterdam also focuses on improving existing infrastructure to make it more climate-resilient. These include upgrading drainage systems, strengthening levees and flood barriers, and improving the capacity of existing water storage facilities. By strengthening the city's existing infrastructure, Rotterdam aims to improve its ability to cope with heavy rainfall events and reduce the impact of urban flooding.



Funded by
the European Uni

International Cooperation:

Rotterdam actively participates in international collaborations and knowledge sharing platforms to share experience and best practices with other cities facing similar challenges. The city has been involved in initiatives such as the "100 Resilient Cities" program.

7.7.2 Coast flood And Erosion Practical Tips for : Individuals

- **Get Information** : Coast flood And storm waves about weather status your predictions And warnings follow-up . Local to emergency alerts sign up .
 - **Flood Insurance** : Especially high risky One in the region If you are experiencing flood insurance buy to take think .
 - **Prepare an Emergency Kit** : Evacuation in case food , water , first aid And medicines like basis materials including One emergency kit prepare .
 - **Your home flood Opposite Protect** : Important your belongings And your furniture more high to levels upgrade . Door of the entrances around flood barriers to place think .
 - **To evacuate Ready Be** : Evacuation your route know And if necessary your home quickly abandon to do for One your plan let it be .
 - **Planting Local Plants** : soil to fix And erosion to reduce helper to be for of your property near Plant native plants .
 - **Awareness Broadcast** : **Share** your family , friends And your neighbors coast flood And of erosion risks And How will be prepared about educate .
- 7.3 Municipalities And Other organizations Coast floods And erosion To reduce For received Measures :



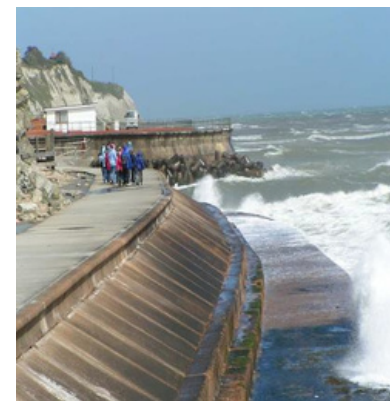
Funded by
the European Uni

7.3.1 Structural Precautions “ Hard engineering Structures ”

These measures are floods And erosion stop or to reduce for to the shore (Coast walls , breakwaters , artificial noses) or open to the seas (sea build breakwaters made from buildings occurs .

7.3.1.1 Sea walls

Sea walls , susceptible to erosion And This to the raid opposite protection providing durable coast defense are their structures . Wave its energy reflects And coast by stabilizing the lanes infrastructure They protect . However ecosystems They can break it . Sea walls , breakwaters And Beach his feed may contain more wide One strategy is part of .

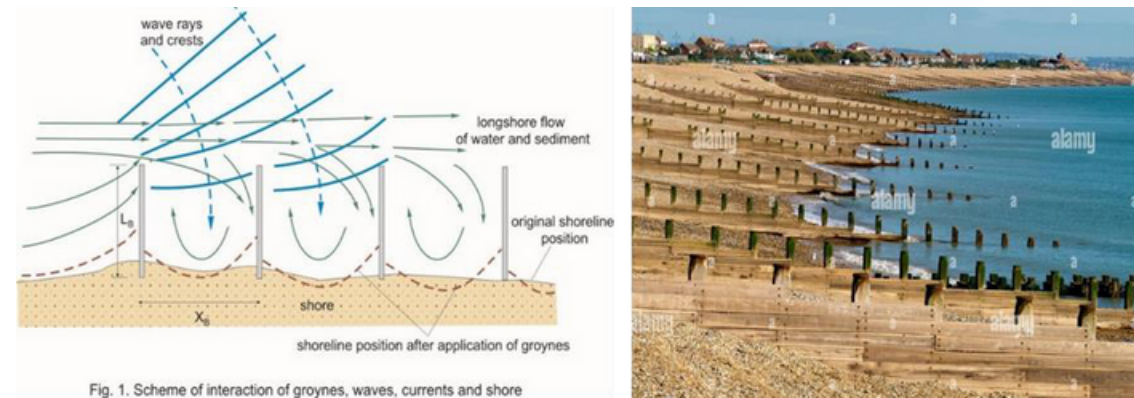
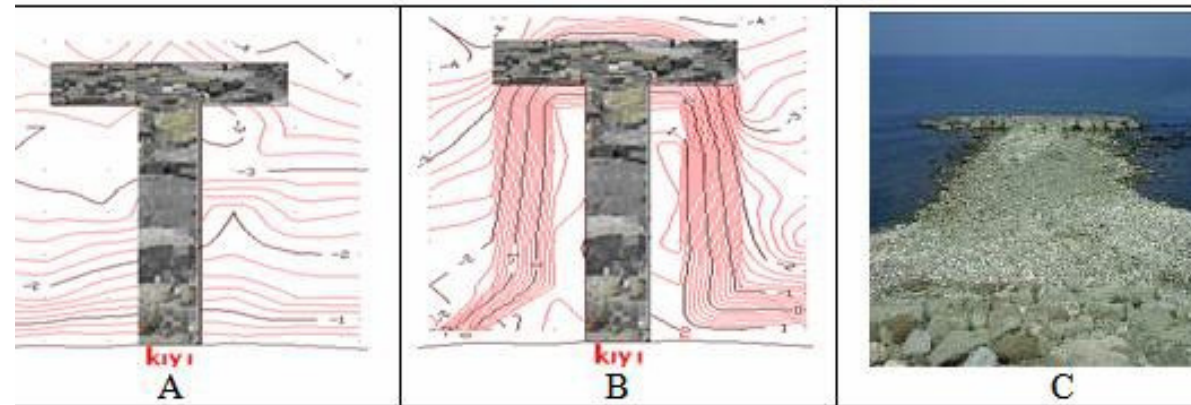


Revetments



7.3.1.2 Groynes

Groynes are engineered structures built perpendicular to the coastline to prevent erosion and protect beaches. It traps sediment and expands beaches. However, it can cause downdraft erosion and alter coastal processes. Groynes are part of a coastal management strategy, along with methods such as seawalls and beach nourishment.





7.3.1.3 Gabions

Gabions are wire mesh baskets filled with rocks used in civil engineering and coastal defense. It controls erosion, stabilizes slopes and absorbs water or wave energy. Gabions are flexible, durable and cost-effective. However, they require maintenance for wire mesh corrosion and may not be suitable for high



water flow or extreme wave conditions. Gabions are widely used and require careful design for optimum performance.

7.3.1.4 Breakwater offshore

Offshore breakwaters are protective structures made of rocks or concrete parallel to the coastline. It reduces wave force and protects ports and infrastructure. Breakwaters absorb wave energy, reducing erosion and damage.

Wave climate and water depth are taken into account in the design. It affects sediment transport and habitats. Proper design is crucial to balance benefits and environmental concerns. Offshore breakwaters are important for wave protection and navigation.





7.3.1.5 Rip-Rips

Rip-Rips are a type of protective structure used in coastal and river environments to prevent erosion and stabilize shorelines. They consist of durable, large-sized rocks or concrete blocks placed along shorelines or river banks to absorb the energy of waves or currents and reduce their erosive effects. The primary purpose of Rip-Rips is to provide a durable barrier against the forces of water, especially in areas prone to erosion.



7.3.2 Non-Structural (Soft) Adaptation Measures

Non-structural adaptation measures manage climate change impacts without physical infrastructure. These include land use planning, early warning systems, education programs and governance frameworks. Non-structural measures complement physical solutions, increasing durability and reducing fragility.

7.3.2.1 Beach nourishment/regeneration

Beach nourishment is an artificial method used to enhance beaches by adding sand or sediment. It expands the coast, protects it from erosion and storms, and supports tourism. Sand is dredged and placed on eroded beaches and requires maintenance. Considerations include cost, sand availability and environmental impacts. Beach nourishment is a temporary solution often used

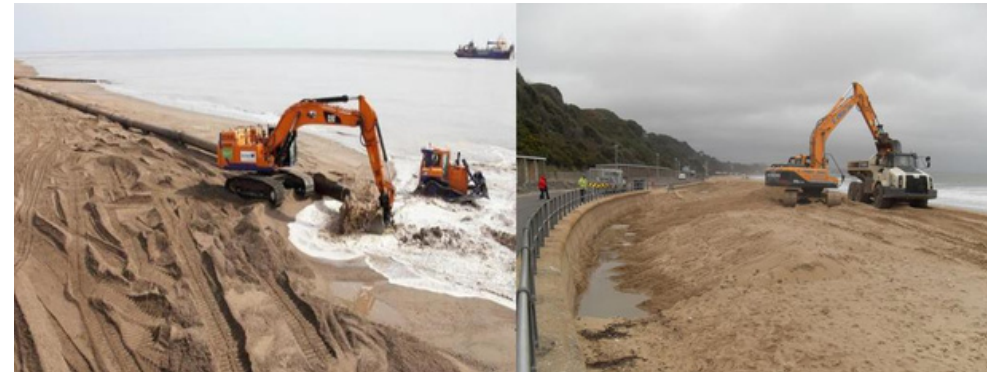


Funded by
the European Uni



in conjunction with other coastal strategies protection .

for comprehensive shoreline



7.3.2.2 Coastal Expansion Measures

Beach expansion measures expand or create new beach areas. These include beach nourishment, dune restoration, groin construction and artificial reefs. These measures address erosion, improve recreation and provide storm protection. Effectiveness depends on local conditions. Planning, evaluations and stakeholder engagement are essential for success .





Funded by
the European Uni

7.3.2.3 Cliff Stabilization and Terracing

Cliff stabilization and terracing manage erosion and instability. Techniques include slope stabilization, retaining walls and terracing. Terracing creates flat platforms for beach access, erosion control and vegetation support. Planning, engineering expertise and environmental considerations are vital. They protect cliffs and coastal landscapes .



7.4 Case Studies

7.4.1 US Gulf the shore Protection – Coastal Adaptation their strategies

Comparison

Difficulty :

across the USA coast communities , especially Mexican bay Throughout , a number of factors combination because of growing flood with its risks opposite is facing :

- Development : Coastal in the regions growing population And infrastructure expansion flood risks intensifies .
 - Climate Change : Ascendant sea levels , storm in the models Changes
And growing storm density flood threats It increases .



Funded by
the European Uni

Traditional Approach :

Historical aspect coast protection , sea walls And sets like " gray infrastructure solutions big to the extent He trusted . However , this methods expensive may be limited ecological benefits owner it could be And LONG in the term effective It may not be .

emerge out Alternative :

Oyster reefs And watery restore areas like nature based on adaptation (NbA) measures alternative One approach aspect interest sees . These solutions , flood of protection beyond potential benefits offers these those includes :

- Marine life for habitat restoration . • Improved This quality .
- Increasing coastline durability .

Research Project :

Reguero and others by in PLOS ONE published One study (2018) [<https://doi.org/10.1371/journal.pone.0192132>], USA Gulf on the coast various coast adaption of strategies cost effectiveness compared .

Methodology :

- Researchers , different scenarios under flood risk to evaluate for quantitative a risk assessment frame they used .

Fly wide adaption measure category eyelash in front They kept :



- Nature based (e.g. oyster of reefs restoration , wetlands areas restoration)
- Structural (e.g. marine walls , embankments)
- Policy (e.g. structure regulation improvements , flood bed regulations)

Key Findings :

- Coast development , especially big disasters flood of the risk for important One repulsive is the power .
- Climate change , increasing storm density And sea of the level rise because of more chic flood to the events contribute will be found . • By 2050 much Gulf coast along yearly flood risk to 2030 compared to two doubled coming out It is foreseen .
 - However , the cost effective adaption strategies possible flood their losses important to the extent can reduce .
- Nature based on Answers especially cost effective aspect emerge output And potential 50 billion as of the dollar on naughty prevented .
- Oysters reefs And watery area restoration , NbA options between –most high benefit–cost rates showed .

To go forward :

- Working , coastal to the protection aimed at comprehensive One to approach heard need emphasizes .
- NbA strategies traditional methods And policy with their interventions combine , future to the floods opposite –most effective to defend can provide .



Funded by
the European Uni



- To NBA investment make environmental restoration encouragement while flood protection by providing win win scenario presents .

Additional Notes :

this case work , shore adaption in their strategies nature based on your solutions growing your role emphasizes . Climate change coast floods the threat As you intensify , NbA communities And ecosystems to protect for cost effective And environment friendly One approach offers . .





7.4.2 Adapting to Tidal Flooding in Langsa, Indonesia - A Community-Focused Approach

Difficulty:

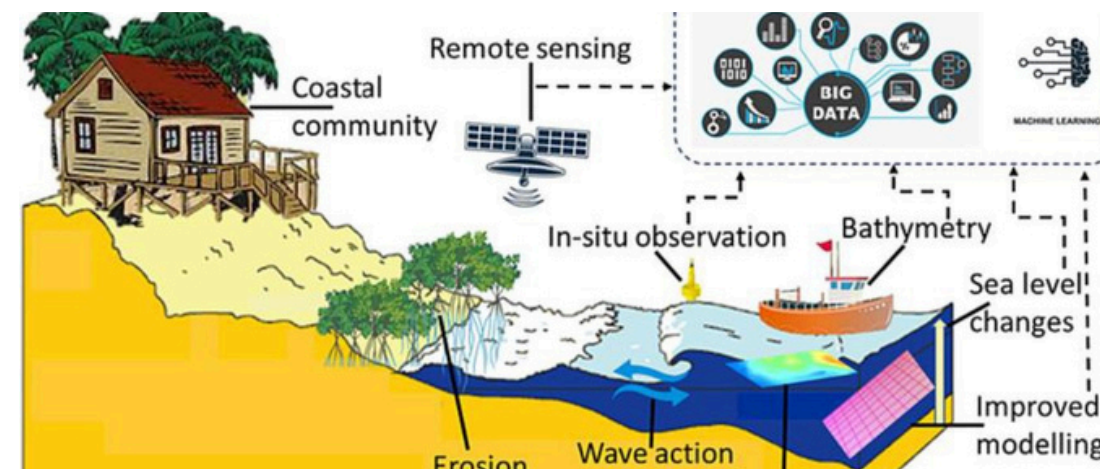
Indonesia's coastal city of Langsa faces frequent tidal floods that disrupt lives and threaten property. Traditional flood risk reduction efforts in Indonesia have focused on large-scale structural measures, neglecting the valuable role that communities can play in adapting to these challenges.

Community Reaction:

This study published by Aksa & Afrian (2022) investigates how the Langsa community responds and adapts to tidal flooding without significant government intervention.

Research Methodology:

Researchers conducted in-depth interviews with village chiefs, officials, youth leaders and community members to understand their experiences with tidal flooding.





Funded by
the European Uni

Key Findings:

- **Underestimated Risk:** Despite experiencing frequent flooding, some community members underestimated the severity and potential dangers of tidal flooding.
- **Autonomous Harmony:** The community consists primarily of "gotong", a traditional practice of mutual cooperation. Royong adopted various strategies to manage flood risks through
- **House Raising:** Residents raised the floor levels of their houses using wooden materials to raise them above flood waters.
- **Community-Built Dams :** The community built small dams along the coastline to hold back flood waters.

Importance of Social Capital:

gotong " as a form of social capital that strengthens the community's ability to cope with disasters. Royong. Collaborative efforts and a shared sense of responsibility enable residents to take basic adaptation measures without relying solely on external support.

Suggestions:

- **Government Recognition:** The government must recognize the critical role of community-driven adaptation strategies in managing flood risks.
- **Integrated Coastal Management:** A more comprehensive approach to coastal zone management is needed, including both structural measures and community-based adaptation plans.



Funded by
the European Uni

64



- Capacity Building: Providing training and resources to communities can increase their ability to implement effective and sustainable adaptation strategies.

Forward :

By recognizing the value of community-led adaptation initiatives and encouraging collaboration between communities and authorities, Langsa can build a more resilient future against tidal flooding .





Funded by
the European Uni



Source:

- Aksa, F. I., & Afrian, R. (2022). community adaptation strategies towards tidal flood : A Case study in Langsa , Indonesia . International Journal of Disaster Risk Science , 13(6), 1427-1434. [invalid URL removed]



Funded by
the European Uni

- **8.3. Practical Tips : Biodiversity And ecology To protect For Rapport**
actions
- **8.3.1 Practical Tips for Individual Action**
- **Eco- Citizen Be :**
- **your routine Go green :** within 5 km radius your work on foot , by bike or collective by transport do . car use -most member download for your work only One on the journey combine . Back not to return grocery shopping for your route plan .



Shower time: Shorten showers to 5 minutes. Install a low-flow shower head that reduces water use by 2 gallons per minute. Invest in a shower timer to keep track of time.



Funded by
the European Uni



- **Energy Vampires:** Unplug unused chargers, phone docks, and electronic devices. Enable power saving settings on devices and computers. Turn off lights and electronic devices when leaving a room. Consider smart power strips that automatically cut power to devices not in use .



- **DIY Vegetable Garden:** Start a small balcony garden using recycled containers or a vertical plant rack on your windowsill. Grow herbs, cherry tomatoes or leafy greens that require minimal space and sunlight. Use online resources for balcony gardening tips.



Funded by
the European Uni

68



- **Shop Smartly:** Choose reusable shopping bags and containers, such as cloth tote bags or stainless steel water bottles. Buy local and seasonal produce from farmers markets to reduce transportation emissions and support local agriculture .



- **Repair, Don't Replace:** Learn basic repair skills for clothing, appliances, and furniture through online tutorials or community workshops. Extend the life of your belongings by repairing small tears, replacing knobs, or tightening loose screws .



Funded by
the European Uni



Water Wisely: Water your lawn and plants only when the top soil feels dry. Watering in the early morning or evening minimizes evaporation. Use a watering

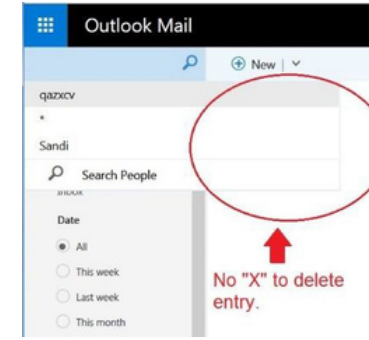


can for targeted watering and avoid sprinklers that waste water.

Digital Declutter: Unsubscribe from unwanted emails and delete unused apps. Clear browsing history and cookies on your devices regularly. Data storage consumes energy, so reducing digital clutter helps.



Funded by
the European Uni



Eco-Friendly Laundry: Wash clothes in cold water whenever possible, as hot water uses significantly more energy. When weather permits, hang dry clothes on a drying rack outside instead of using the dryer.



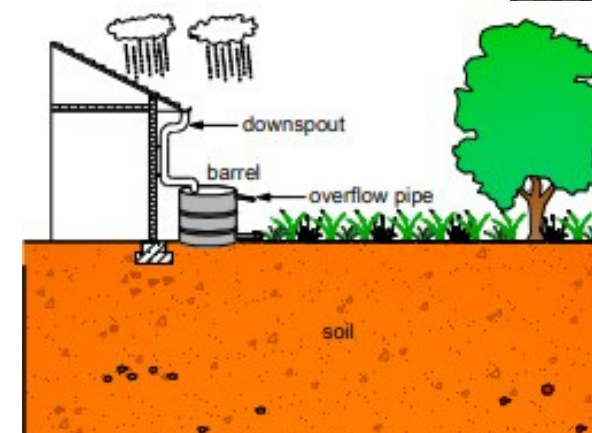


- **8.3.2 Practical Tips for Municipal Action**

- **Green Your City:**

- Community Compost : Implement curbside compost programs or designate community drop-off points for food scraps. Partner with local businesses to collect food waste. Offer educational workshops on the basics and benefits of composting .

- **Rain Barrel Discounts:** Offer discounts to residents who install rain barrels to collect rainwater to irrigate gardens. Conduct workshops on installing rain barrels and rainwater harvesting techniques.

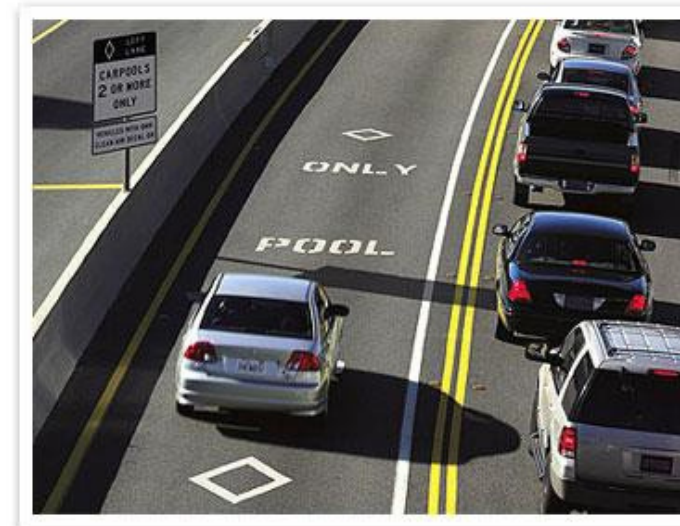




Funded by the European Uni



- **Rideshare Incentives:** Create designated carpool lanes with shorter commute times to encourage shared rides. Offer free or discounted parking for carpoolers in public facilities. Partner with ridesharing companies to promote ridesharing options.





Funded by
the European Uni



Solar Power for Parks: Install solar panels on the roofs of public parks and buildings to produce clean energy. Use the electricity produced to power parking lights, toilets or kiosks. Partner with local solar companies for installation and maintenance.



Schoolyard Habitats: Partner with schools to create wildlife gardens with native plants and flowering shrubs that attract pollinators such as butterflies and bees

. Convert part of the schoolyard into a native plant meadow for educational and habitat creation purposes. Provide educational programs to students on the importance of biodiversity.



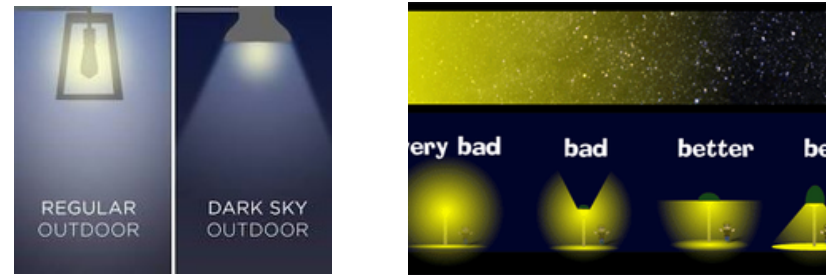
Reducing Light Pollution: Implement regulations to reduce light pollution at night. Encourage businesses and residents to use protected outdoor lighting that



Funded by
the European Uni



directs light downwards and minimizes light intrusion. Encourage the use of timers to ensure outdoor lights turn off at designated times .



- **Biodiversity apps:** Develop smartphone apps that allow residents to report wildlife sightings and track species distribution within the city. Partner with local environmental organizations to curate app content and ensure data accuracy. Offer educational resources and information about local wildlife through the app.





Funded by
the European Uni

- **Hold Swap Meets** : Hold community swap meets at parks or community centers. Encourage residents to trade in unwanted clothing, books, furniture or household items rather than throwing them away. Promote the swap meet through social media and local news outlets.



- **Promote Green Cleaning:** Develop educational campaigns residents about the benefits of environmentally friendly cleaning products and practices. Offer workshops on making your own cleaning solutions with natural ingredients like vinegar and baking soda. Partner with local sustainability organizations to create a green cleaning product buying guide for residents.





Funded by
the European Uni

This is detailed tips , individuals And municipalities biological diversity protection And urban ecology development about real make a difference for what they can throw applicable steps offers .

8.4. Case Studies

8.4.1 Mida Creek Boardwalk: Enjoy nature Protecting the Society Strengthen (Watamu , Kenya)



Focus : This case work , Kenya watamu Mida Creek Community Boardwalk project in the city by examining mangrove protection , society development And climate of change reducing on you effect emphasizes .

Difficulty :

- Global warming up fueled by growing storm events , especially from protective vegetation purified in areas coast to erosion path It is opening .
- Mangrove the destruction of forests , this of forests fishes for reproductive area aspect service to do because of local fishery industry threatening It does .

Solution : Mida Creek community , Kenya Wilderness Vital With Services (KWS) partnership by doing And From UNDP's GEF program fund by providing A lot directional One project implemented :



Funded by
the European Uni

77



- **Mangrove Restoration** : Mangrove in the forest One wood walk way construction to be sensitive to the ecosystem given damage -most member while downloading eco-tourism for One path provided .
- **Community Participation** : project , business creating And tourism income sharing by One ownership sense of And economic getting stronger encouragement who makes local Woman groups And guides It contained . • **Environment Training** : Project , local school children for education programs , mangroves importance about awareness create And your future environment protectors to raise contains .
- **Sustainable Applications** : Project , local ecosystem And in economy vital role about awareness by creating mangrove destruction of forests blocking .

Effect :

- **Protection** : Walk path , nature enthusiasts for controlled access permission while giving to the mangroves given damage -most member downloading .
- **Economical Benefits** : Project , tourism fees And guidance services through society for income by producing of poverty to reduce contribute is available .
- **Education** : Environment education , local young people protection defenders to be encouragement it does .
- **Climate Decrease** : Healthy mangrove ecosystems , strong of storms From where is coast erosion reducing natural barriers task sees .

Overall , Mida Creek Community Walk way project , nature protection , society development And climate to change rapport for successful It shows a model .



Funded by
the European Uni

78



8.4.2 Adapting to Wildfires: Chile's Multifaceted Approach



Difficulty :

Chile , since 2010 growing forest fire to the risk path blooming with a mega drought struggle it does . Making the situation worse thing , fire spread facilitating extreme hot weather waves , strong winds And bad local It was planning . Additional as forest of fires important One part (41%) is intentional aspect was removed . These factors will affect the south in 2023. in chile devastating forest with its fires concluded .

Reaction :

Chile government , forest with its fires struggle to do And future to threats rapport to ensure for comprehensive One strategy implemented :

- **Planning And Coordination :**

- o Agriculture Ministry , National Forestry Company (CONAF) and which includes the Chilean Wood Company (CORMA) forest fire prevention And control for National Strategic plan enabled .



Funded by
the European Uni

79



o Resources coordinate to do And updates to ensure for National Disaster Prevention , Mitigation And Attention He benefited from the System (SENAPRED) . • Emergency Response :

o Affected in regions extraordinary status advert was destroyed by fire struggle for additional employee And resources mobilized was done .

- **Again Construction And Recovery :**

o Rural drinking juice systems like damaged infrastructures to repair focused .

- **Reduction :**

o Forest plantation owners fire prevention And decrease on the subject responsibilities emphasized .

Forestry applications security for in regulation of the state your role six drawn .

- **Climate to change Rapport :**

o increasingly growing extreme weather events hand to take for forest management of strategies adaptation need acceptance was done .

- Homogeneous in the forests Problem :**

Exotic species big monoculture to plantations to be trusted fire risk increases And environmental sustainability weakens :

- **Biodiversity And Ecosystem of your services Loss :** Homogeneous plantations local of forests replace takes biodiversity is decreasing And This



Funded by
the European Uni

80



supply And climate arrangement like vital ecological services in danger is beating . • Climate To your goals Threat : These plantations are local forests carbon in holding more effective Since , Chile has a target of 2050 much carbon to neutrality access their efforts It can prevent .

- **Social Conflict** : plantations expansion , Mapuche nation , forest companies And government between to conflicts path opened .

to the future View :

of chile A lot directional approach forest with its fires struggle on the subject your determination shows . However , continue who makes drought And homogeneous of forests created by difficulties , constant adaption And sustainable forestry to its applications TRUE One passage necessary It makes . this case study , ecological concerns , economic facts And social justice balancing forest fire to the management holistic One your approach its importance emphasizes .



9.2 Practical Tips: Individual Tourists and Municipalities

9.2.1 Practical Tips for Individual Tourists:

9.2.1.1 Development of Tourist Attractions

Beat the Heat: Plan your tours for cooler times of the day, bring a reusable water bottle, and dress appropriately for the weather.



Rainy Day Activities: Explore museums, art experiences as backup options.

galleries, or cultural

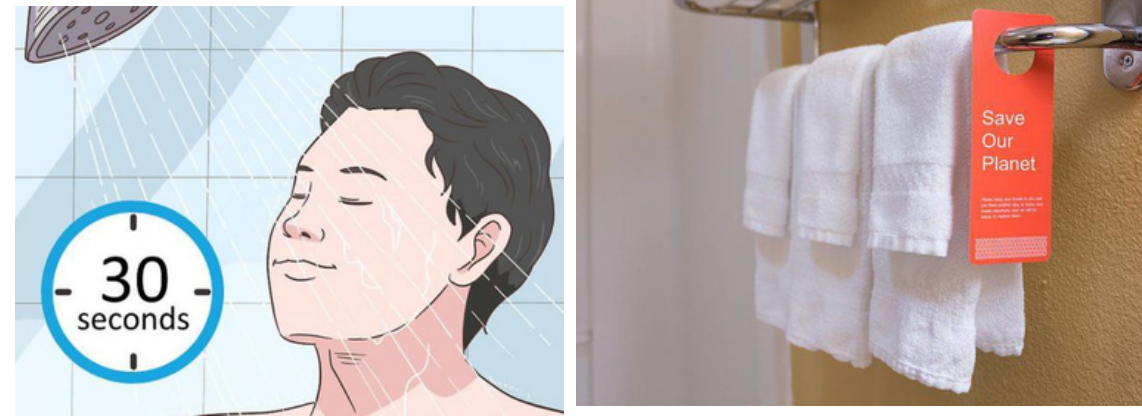


Climate Change Storytelling: Engage with exhibits, signage, or guided tours that highlight sustainable practices and local conservation efforts.



9.2.1.2 Flexibility for Tourism Enterprises:

o **Book with Cancellation Flexibility:** Choose travel providers with clear cancellation policies in case of unexpected weather events.



- **Water Management:**

Minimize Water Use: Take shorter showers, reuse towels and sheets when offered, and keep faucets from running unnecessarily.

Support Eco-Friendly Accommodations: Choose hotels with water conservation practices and certifications.





- **Create Durable Structures**

Do Your Research Before Booking: Consider the potential impact of climate on your chosen destination and choose accommodation in less vulnerable locations.

Energy Management

:

- o **Minimize Energy Use:** Turn off lights and electronics when not in



use, and adjust thermostats when leaving your room.

- o **Support Green Hotels:** Choose hotels with energy-efficient

practices and certifications.



-
-



Funded by
the European Uni

- **Effective Waste Management:**

- **Pack Light and Reusable:** Pack reusable water bottles, shopping bags, and toiletries to minimize waste generation.



- **Respect Local Recycling Guidelines:** Learn about local recycling practices and participate in available programs.





Funded by the European Uni

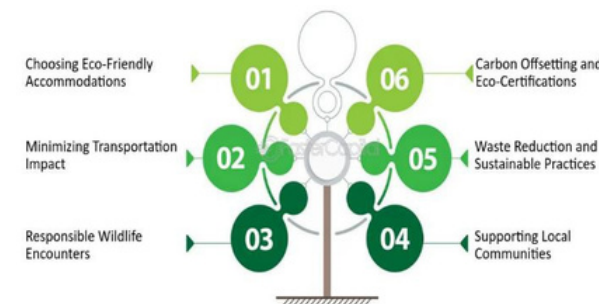


- Reducing Carbon Footprint:
 - o Offset Your Travel: Consider carbon offset programs to reduce your travel emissions .



- Choose Low-Emission Travel: Choose walking, cycling, public transport or electric vehicles whenever possible.
- o
- Support Eco-Tours: Choose tours that prioritizesustainable practices and minimize environmental impact.

Sustainable Travel Practices





Funded by
the European Uni



T Travel Smartly: Pack light, minimize air conditioning use, and be mindful of



Sustainable Travel Tips for Your Luggage

- Pack light
- Choose eco-friendly materials
- Avoid single-use items
- Pack for the local climate
- Consider the local culture



your resource consumption during your trip.

9.2.2 Municipalities:

9.2.2.1 Development of Touristic Attraction Centers :

- o **Invest in Climate Resilient Infrastructure:** Install misting stations, shaded walkways, and retractable roofs for outdoor events.





Funded by
the European Uni



o **Promote Cultural and Heritage Experiences:** Highlight museums, art galleries and traditional craft shows as alternative activities.



o **Integrate Climate Change Awareness:** Develop exhibits, signage, and guided tours that showcase adaptation efforts and educate tourists about responsible behavior .





Funded by
the European Uni



9.2.2.2 Flexibility for Tourism Enterprises:

- o Support Training and Resources: Organize workshops on climate risks and adaptation strategies for tourism businesses.

Regional Climate Workshops

econext CLIMAtlantic

ADAPTATION VS. MITIGATION

ADAPTATION	MITIGATION
A variety of actions that are meant to reduce or compensate for or adapt to the adverse impacts that arise from changes in the Earth's climate	Actions or changes in societal behavior taken to reduce or eliminate greenhouse gas (GHG) emissions and/or to remove GHGs from the atmosphere to prevent significant adverse climate effects

- o Develop Flexible Booking Guidelines: Encourage tourism businesses to adopt flexible cancellation policies for extreme weather events .

FLEXIBLE CANCELLATION POLICY

Enjoy Our Worry-Free Cancellation Policy

We're excited to announce our new Flexible Cancellation policy on many of our best-selling tours! Plan your summer travels worry free with a wide variety of tours and travel packages.

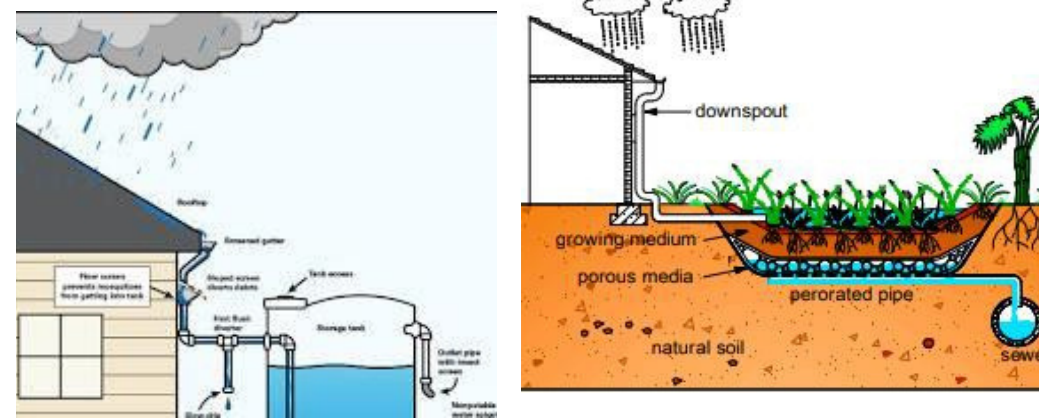
We know plans can change, so we've been working with our tour providers to offer even more flexible cancellation options to provide you peace of mind.

Flexible Cancellation options vary by product and allow you to cancel anywhere from four days prior to your tour departure date all the way to just 24 hours before the tour departure date, depending on the tour.

To find out if a particular tour offers Flexible Cancellation, look for the special box directly below the carousel of tour photographs on that tour's web page.



- • **Water Management:**
- o **Water Conservation Programs:** Implement water conservation regulations for tourism businesses and public facilities .



- **Invest in Rainwater Harvesting:** Install rainwater harvesting systems for irrigation and other non-potable uses in tourist areas .
- **Promote Sustainable Landscaping:** Encourage drought-tolerant plant selections, gravel gardens and efficient irrigation systems in tourism areas .





Funded by
the European Uni



Building Durable Structures:

o **Building Codes and Regulations:** Implement stricter building codes for new tourism infrastructure that take into account flood risk, extreme heat and strong winds .



o **Renovation Initiatives:** Offer incentives to tourism businesses to retrofit existing buildings with flood-resistant materials, natural ventilation systems and cool pavements.





Funded by
the European Uni

- **Energy Management:**
 - o **Green Energy Incentives:** Offer tax breaks or subsidies for tourism businesses to adopt renewable energy sources such as solar panels.



- o **Partner with Energy Providers:** Collaborate with energy providers to promote renewable energy options for tourism businesses.





Funded by
the European Uni

- **Effective Waste Management:**
 - **Reduce Single-Use Plastics:** Ban or restrict single-use plastics in tourist areas and encourage reusable alternatives.



- **Support Compost Programs** : Establish compost facilities or partner with existing programs to manage organic waste from restaurants and tourism



businesses.



Funded by the European Uni



o **Expand Recycling Programs:** Implement open and accessible recycling systems for tourists and locals.



o **Waste Management Partnerships:** Partner with waste management companies to ensure responsible waste disposal and explore waste-to-energy or recycling programs .





Funded by
the European Uni

- **Reducing Carbon Footprint:**
 - **Sustainable Transport Infrastructure:** Invest in public transport, cycleways and pedestrian paths to promote low-emission transport.





Funded by
the European Uni

9.3 Case Study

9.3.1 Singapore: Reducing Hotel Energy Consumption



Destination: Singapore

Challenge : Mitigate climate change by reducing energy consumption in the tourism sector.

Solution: Energy Smart Building Plan for Hotels, launched in 2007.

Why Hotels?

- Hotels are major energy consumers, accounting for approximately 18% of building electricity use in Singapore.

Focus on Hot Water:

- Hot water production is a huge energy loss for hotels.



Funded by
the European Uni

96



Case Study: The Regent Singapore

- Previously relied on expensive diesel boilers (costing S\$29,000 per month).
 - A heat recovery system was implemented in 2006.
 - This system reduces energy use by using a chiller that can also be used as a heat pump.
 - The payback period of the new system was only 1.5 years. Key

Players:

- Ministry of Environment and Water Resources
- National Environment Agency
- Singapore Hoteliers Association
- Individual Hotels

Effect:

- Encourages hotels to adopt energy efficient practices.
- Reduces greenhouse gas emissions and energy costs for the tourism sector.



Funded by
the European Uni



9.3.2 Spier Leisure: Leading the Charge in Sustainable Tourism (Western Cape, South Africa)





Focus: This case study highlights Spier Leisure's commitment to environmental sustainability in the South African tourism industry.

Challenge: Spier is aware of the following dual threat:

- **Global warming:** Increasing carbon dioxide emissions contribute to climate change.
- **Loss of biodiversity :** Healthy ecosystems are essential for carbon sequestration (CO2 absorption).

Solution : Spier takes a multifaceted approach:

- **Sustainability Reporting :** Develops and publishes annual reports summarizing their progress towards environmental goals. This transparency promotes accountability and showcases best practices.
- **Data-Driven Approach:** Measures energy consumption from various sources such as electricity, gasoline, diesel and gas. This data provides a clear picture of their environmental footprint and areas for improvement.
- **Ambitious Goals:** Sets annual goals to reduce energy consumption. Setting measurable goals keeps them focused on progress.
 - **Practical Initiatives:**
 - o **Measurement:** Installs measurement devices throughout the facility for each business unit (hotel, conference center, cheetah center, etc.). This allows for individual monitoring and targeted conservation efforts.
 - o **Hot Water Optimization:** Reduces hot water availability from 16 hours per day to 8 hours. This simple adjustment provides significant energy savings.



Funded by
the European Uni



o **Energy-Efficient Lighting:** Upgrades all 155 hotel rooms and some common areas with energy-efficient bulbs. This reduces electricity consumption while maintaining guest comfort.

Impact: Spier Leisure's commitment to sustainability extends beyond its own operations. By sharing their practices through annual reports and potentially showcasing these initiatives to guests, they inspire other businesses in the area to do the same. This fosters a collaborative effort towards a more sustainable tourism industry in South Africa.

9.3.3 North American Ski Industry Tackles Climate Change: A Race to Keep Winter Cool



Focus : This case study examines innovative mitigation initiatives undertaken by the North American ski industry to combat climate change, specifically the National Ski Areas Association's (NSAA) "Keep Winter Cool" program.



Funded by
the European Uni



Challenge: Climate Change poses a double threat to the ski industry:

- **Greenhouse Gas Emissions:** Ski resort operations, especially snowmaking, accelerate climate change by contributing to greenhouse gas emissions.
- **Susceptibility to Warming:** Rising temperatures threaten the foundations of industry – reliable snow cover.

Solution: NSAA's "Keep Winter Cool" program pioneers a multifaceted approach to sustainability:

Pioneering Efforts of A. Aspen Ski Company (ASC):

- **First Move Advantage:** As the first facility operator to join the Chicago Climate Exchange (2001), ASC has established a legally binding target:
 - o Annual greenhouse gas emissions accounting.
 - o **10% emission reduction by 2010 (based on 1999).** • **Multifaceted**
Implementation: To achieve this goal, ASC implemented a number of initiatives:
 - o **Largest Solar Panel in the Ski Industry:** Harnessing renewable energy with a large solar photovoltaic installation.
 - o **On-Site Micro-Hydro Energy:** Producing clean electricity with a micro-hydroelectric power plant.
 - o **Biodiesel Conversion:** Converting snowplows to cleaner-burning biodiesel than traditional fossil fuels.



Funded by
the European Uni

101



- o **Green Building Leadership:** Constructing two buildings certified under LEED (Leadership in Energy and Environmental Design).

- o **Purchasing 100% Wind Energy:** Providing electricity from wind energy generators.

B. NSAA's Green Energy Program (Launched in 2006):

- **Industry-Wide Push for Renewable Energy:** Encourages ski resorts to invest in renewable energy sources.

- **Impressive Results (2006/2007):**

- o 58 facilities purchase renewable energy (mostly wind) for some or all of their operations.
- o 28 facilities achieve 100% renewable energy use (through renewable energy credits if local grids lack sufficient renewable resources).

- o An estimated 292 million kWh of green energy was purchased and more than 193,000 tonnes of CO2 emissions were avoided.

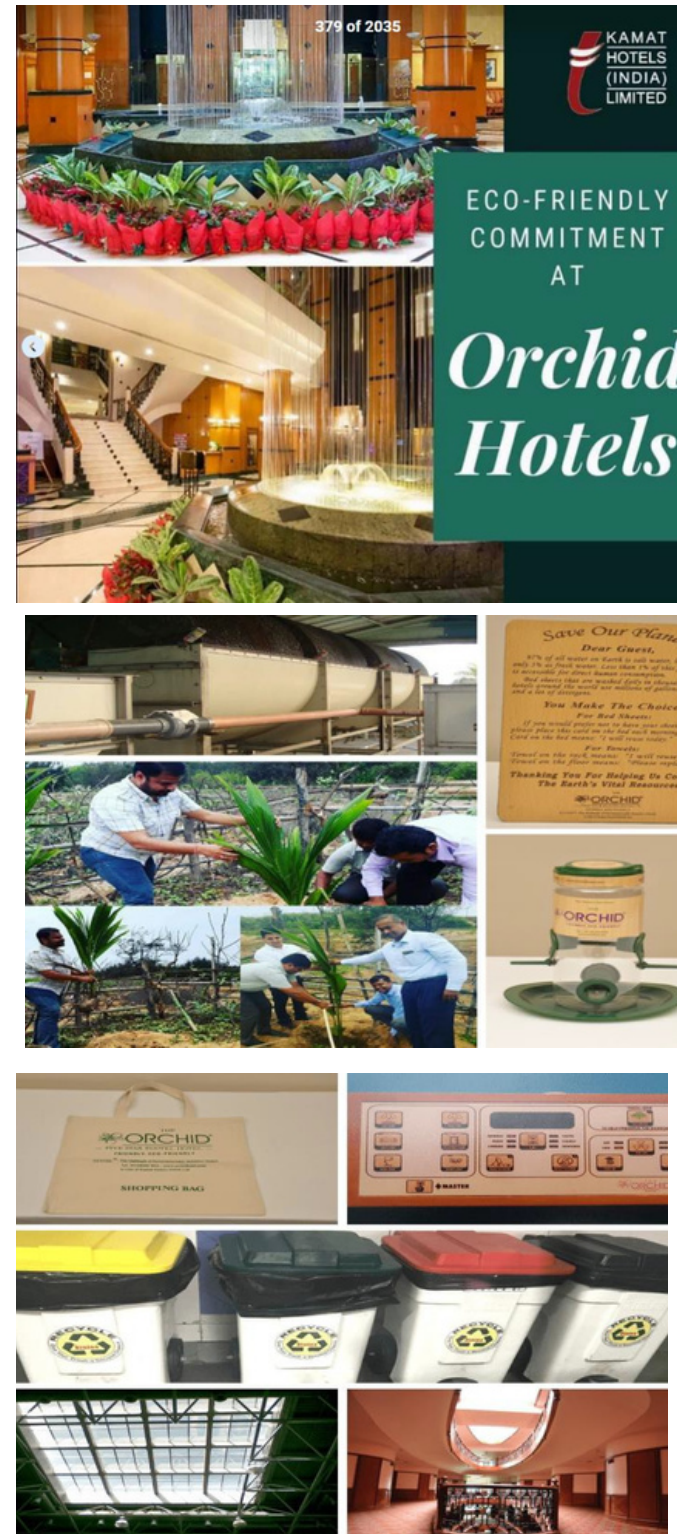
Impact: The North American ski industry serves as a model for other tourism industries. The “Keep Winter Cool” program shows that sustainability and economic success can go hand in hand. By embracing renewable energy and innovative solutions, ski resorts can reduce their environmental footprint and ensure the longevity of the winter sports industry in a changing climate.



Funded by
the European Uni



9.3.4 Case Study: The Orchid Hotel – Sustainable Luxury
in Mumbai





Funded by
the European Union



Focus: This case study examines The Orchid Hotel, a five-star property in Mumbai, India, and its commitment to achieving environmental sustainability while maintaining profitability. In a world facing the challenges of climate change, The Orchid's approach shows that luxury hotels can be part of the solution.

Challenge: Traditionally, luxury hotels have been viewed as significant contributors to environmental problems due to their high resource consumption and energy use. This means a larger carbon footprint and increased greenhouse gas emissions, both of which accelerate climate change. The Orchid Hotel aimed to challenge this perception and show that environmentally friendly practices can be financially beneficial while reducing climate change.

Innovation: The Orchid has taken a unique approach to sustainability by combining financial viability with environmental responsibility and climate change mitigation:

- **Profitable Sustainability:** The hotel prioritizes environmentally friendly measures that have been proven to deliver cost savings. Their website showcases figures showing the financial benefits of environmental management.
- **Holistic Systems Perspective:** Beyond isolated initiatives, The Orchid implements a comprehensive approach that addresses all environmental aspects of the hotel's operation and constantly seeks best practices with climate change in mind.

Sustainable Practices: The hotel implements a variety of environmentally conscious practices that directly combat climate change:

,



- **Sustainable Architecture and Construction:**
 - **Passive Design:** The building uses a facade with depressions and protrusions to minimize heat absorption, reduce dependence on air conditioning and reduce energy consumption. The design positions a significant portion of the rooms to face the atrium, reducing individual air conditioning needs. Skylights maximize natural light while minimizing heat gain and noise, further reducing energy use for lighting and cooling. A rooftop pool acts as a natural insulator, reducing the need for artificial temperature control.
 - **Eco-Friendly Materials:** The hotel uses fly ash cement (PPC) for construction, which reduces environmental impact compared to traditional cement with lower carbon emissions. The interior partitions are made from recycled materials (“Pretty Easily Made” wall panels) rather than traditional bricks, minimizing resource consumption and associated greenhouse gas emissions. Autoclaved Aerated Concrete (AAC) is used for exterior and wet walls and offers the benefits of thermal insulation and sound absorption while adding fly ash. This lowers the hotel's carbon footprint by reducing the energy required for heating and cooling.
- **Saving on water:**
 - o **Water-Saving Faucets:** All faucets are equipped with aerators, reducing water flow by up to 50%, minimizing water usage and the associated energy required for purification and pumping. Sensor-activated faucets in restaurants further reduce water use and energy consumption.
 - o **Low Flow Toilets and Urinals:** The hotel uses Geberit Concealed Cisterns, which use only 6 liters per flush, significantly less than traditional toilets.



Funded by
the European Union

Similarly, Geberit Urinal Flush Valves with infrared detectors ensure that water is used only when necessary, reducing water consumption and the energy required for water purification and wastewater treatment. Impact: The Orchid Hotel's commitment to sustainable practices has yielded positive results, with significant climate change benefits:

- **Financial Savings:** The hotel proves the financial viability of sustainability by demonstrating measurable cost savings achieved through environmentally friendly practices.
- **Reduced Environmental Impact:** Their comprehensive approach minimizes energy and water consumption, reduces resource depletion, and mitigates climate change by reducing carbon footprints.
- **Enhanced Guest Experience:** Sustainability-conscious guests are attracted to The Orchid's commitment to environmental responsibility.
- **Industry Leadership:** The Orchid serves as a model for other luxury hotels seeking to adopt sustainable practices and inspires a broader industry shift towards climate-friendly operations.

Conclusion : The Orchid Hotel stands as a prime example of how luxury and sustainability can coexist. By demonstrating the financial and environmental benefits of eco-friendly practices, The Orchid is inspiring other hotels to embrace a sustainable future for the hospitality industry, contributing to the fight against climate change .



Funded by
the European Uni

106



9.3.5 Case Study: Scandic Hotels – Pioneer in Climate Neutral Hospitality



- **Focus:** This case study examines Scandic Hotels, a global leader in the fight against climate change.
- **Challenge:** The tourism sector, especially accommodation, contributes significantly to greenhouse gas emissions. Scandic Hotels recognized the urgency of addressing this challenge and became a pioneer in sustainable hotel operations.
- **Innovation :** Scandic Hotels embarked on a pioneering journey towards environmental responsibility more than two decades ago:
- **Early Commitment:** The hotel chain set ambitious goals to become a leader in resource efficiency as early as 1994.



Funded by the European Uni

107



- • **Nordic Swan Certification:** By 2008, a significant number of Scandic hotels (106 out of 130) had proven their commitment to environmental sustainability by achieving the prestigious Nordic Swan eco-label certification. Climate Action Goals: Scandic Hotels continues to push boundaries with a clear vision:
- • **Carbon Neutrality by 2025:** The hotel chain has set an ambitious target to achieve carbon neutrality by 2025, aiming to significantly reduce emissions and transition to renewable energy sources.
- **Sustainable Practices:** Scandic Hotels implements a comprehensive strategy that includes several initiatives:
 - • **Resource Efficiency:**
 - **Energy and Water Savings :** Scandic achieved impressive reductions in energy consumption (24%) and water use (13%) between 1996 and 2006. Their ongoing efforts further reduce resource dependency.
 - • **Eco-Friendly Rooms:** Launched in 1995, Scandic's innovative "environmental rooms" promote sustainability. Featuring 97% recyclability, these rooms showcase the chain's commitment to the circular economy.
 - • **Reduced Waste:** By eliminating single-use packaging for amenities such as soap and shampoo, Scandic achieved a significant reduction of more than 400 million products in 11 years. Additionally, the hotel chain prioritizes waste segregation and responsible disposal.
 - • **Sustainable Food and Beverage:**



Funded by the European Uni

108



- **o Organic Offerings:** Scandic supports organic food by offering organic breakfast options in Swedish hotels. In other Scandinavian countries, breakfast products have local eco-labels.
- **o Fair Trade Coffee:** Guests in Sweden, Denmark and Finland enjoy organic and fair trade coffee, highlighting Scandic's commitment to ethical sourcing and sustainability.
- **• Sustainable Supply:** Scandic prioritizes environmentally certified products in its operations by minimizing environmental footprints throughout the supply chain.
- **• Staff Training:** Recognizing the importance of employee engagement, Scandic has trained more than 11,000 staff members on environmentally friendly practices.
- **Impact:** Scandic Hotels' leadership in sustainability has yielded significant results:
 - **• Reduced Environmental Impact :** Their comprehensive approach minimizes resource consumption, reduces emissions and promotes responsible waste management.
 - **• Industry Leadership:** Scandic Hotels serves as a model for other hotel chains looking to adopt sustainable practices. • Enhanced Guest Experience: Sustainability-conscious travelers appreciate Scandic's commitment to environmental responsibility.
- **Conclusion:** Scandic Hotels exemplifies a successful journey towards climate-neutral hospitality. Through their commitment to sustainable practices and ambitious goals, they are inspiring positive change in the hospitality industry and paving the way for a greener future for travel.



- **10.2 Practical Tips for Sustainable Transport (Individuals and Municipalities)**

- **10.2.1 Individuals**

- **Plan Your Trips:** Combine errands and trips to minimize travel and reduce

vehicle emissions. Consider walking or cycling for short distances .



- **Choose Public Transportation:** Use buses, trains, subways or trams whenever possible. Public transport reduces individual carbon footprint and traffic congestion .





Funded by the European Uni



- **Adopt Active Transportation:** Walk, bike or use a scooter for short trips. Active transportation is healthy, reduces emissions and saves on transportation costs .



- **Car Sharing or Van Sharing:** Share rides with colleagues or neighbors on your way to work or school. Car sharing reduces the number of vehicles on the road and fuel consumption.





Funded by
the European Uni

- **Remote working:** Work from home whenever possible to eliminate commuting emissions .



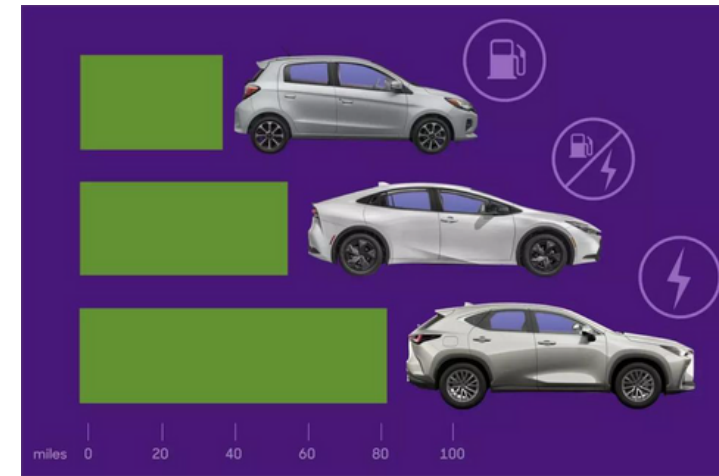
- **Switching to Electric Vehicles:** If possible, consider switching to an electric vehicle for a more sustainable transportation option.





Funded by
the European Uni

- **Travel Smartly:** Pack light for your travels and choose fuel-saving vehicles when renting a car . .



- **Reduce Idling:** Avoid unnecessary idling of your vehicle to minimize emissions . .



-
-
-
-



Funded by
the European Uni

113



- **Maintain Your Vehicle:** Maintain your vehicle regularly for optimum fuel efficiency and low emissions.



- **Municipalities**
- **Public Transport Investment:** Expand and improve public transport systems by increasing routes, frequencies and quality of service. This encourages ridership and reduces dependence on personal vehicles.





Funded by
the European Uni

- **Bicycle and Pedestrian Infrastructure** : Create safe and dedicated bike lanes and pedestrian walkways. Invest in bike share programs and safe parking facilities to encourage cycling .



- **Electric Vehicle Infrastructure**: Develop a citywide network of charging stations to support electric vehicle use. Offer incentives for electric vehicle purchases and home charging station installations.





Funded by
the European Uni



- **Traffic Management Systems:** Implement smart traffic management systems to optimize traffic flow and reduce congestion. Use digital maps and apps to share real-time public transit and traffic information .



- **Sustainable Urban Planning:** Develop urban plans that integrate with transportation systems. Encourage mixed-use development where work, living spaces and amenities are within walking or biking distance .

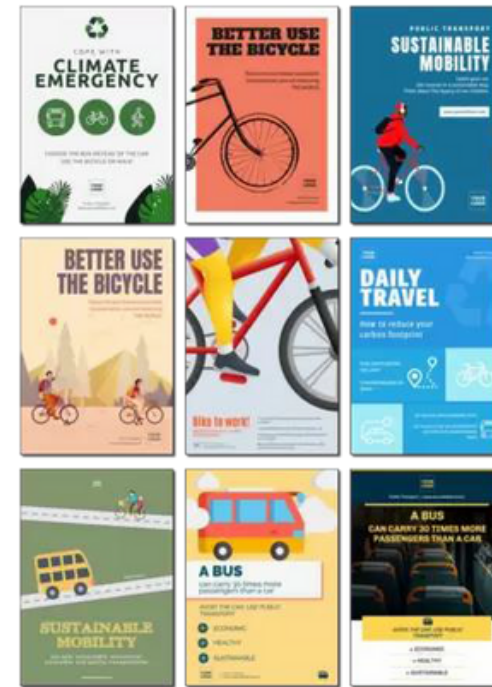




Funded by
the European Union



- **Education and Awareness Campaigns:** Organize public education campaigns to raise awareness about the benefits of sustainable transportation options. Encourage a cultural shift towards more sustainable commuting habits.



- **Collaboration and Stakeholder Engagement:** Partner with the private sector, civil society and local communities to implement sustainable transportation projects. Use collective resources and expertise.
 - **Risk and Emergency Planning:** Develop transportation infrastructure that is resilient to climate change impacts such as flooding or extreme weather events. Integrate climate adaptation strategies into emergency transportation plans.
 - **Monitoring and Evaluation:** Track the progress of sustainable transportation initiatives by tracking passenger data, infrastructure development, and electric vehicle adoption. This helps evaluate the effectiveness of implemented strategies and inform future improvements.



Funded by
the European Uni

117



10.3 CASE STUDIES FOR TRANSPORT 10.3.1 From Smog to Sunshine, Kathmandu's Electric public Transport Transformation

Sunshine, Kathmandu's Electric public Transport Transformation



Destination: Nepal, Kathmandu, a vibrant tourist destination and Nepal's largest city.

Problem:

- Kathmandu's air quality is suffering due to increased traffic.
- A tourist survey conducted in 2005 showed:
- 41% experienced breathing problems.
- 58% reported that vision problems hindered the trip.
- 69% rated the air quality as "poor". Tourists' Request for Change:
- 94% of tourists preferred electric vehicles for sightseeing.
- 79% were willing to pay extra to support electric transportation.



**Funded by
the European Uni**

Increasing Traffic Problem:

- Kathmandu Valley's motor travel demand increased 8.7 times between 1989 (1 billion passenger-km) and 2004.
- Forecasts predict that it will increase to another 27 billion passenger-km by 2025.

Increased Emissions:

- CO2 emissions from passenger transport are lower than in developed cities due to lower car ownership. – However, emissions have increased 5.2 times since 1989 (537,000 tonnes in 2004) due to the increase in private cars and motorcycles.

Solution:

- Promote a “modal shift” towards public transport, especially electric vehicles (EVs).
- This benefits both tourists and locals by:
- Reducing air pollution and improving public health.
- Improving the tourism experience with cleaner air and clearer views.

Common Benefit Approach:

- This strategy links local air quality concerns to global climate change issues. Benefits include:
- Addressing local problems such as air pollution.
- To enable local decision makers to act without making major concessions.
- Building momentum for climate action.



Funded by
the European Uni

Mitigation Plan:

- **Implement a package of small but effective measures:**
- Promote electric vehicles in high-density tourist and heritage areas.
- Promote a modal shift towards public transport.
- Gradually tighten vehicle emission standards. Estimated Impact:
- This multifaceted approach could potentially lead to:
 - 20% reduction in CO2 emissions.
 - 47% reduction in PM10 (particulate matter) emissions.
 - 132,824 fewer cars and motorcycles on the road.
 - 18% reduction in energy consumption.

Synergy for Success:

- The study found strong alignment between local and global goals.
- Cleaner air benefits both residents and tourists.
- Kathmandu can leverage international climate finance such as Clean Development Mechanisms (CDMs) to support electric vehicle adoption.

Important point:

Kathmandu's electric tourism push exemplifies how local action can address global concerns. By prioritizing clean air and a positive visitor experience, Kathmandu can lead the way towards a more sustainable future for tourism and the environment.



Funded by
the European Uni

120



10.3.2 Case Study: Norway- Pioneer in Electric Vehicle Adoption



Difficulty:

The global transportation sector is a major contributor to greenhouse gas emissions. To achieve ambitious climate targets, countries need to transition from fossil fuel-powered vehicles to electric vehicles (EV). However, overcoming consumer hesitation and providing a solid infrastructure are significant challenges.

Norway's Reaction:

Norway has emerged as a global leader in EV adoption, with more than 22% of new vehicle sales being electric. This success can be attributed to a multifaceted approach:



Funded by the European Uni

121



- **Ambitious Goals** : Norway's National Transport Plan targets a 50% reduction in transport emissions by 2030 and new zero-emission vehicles by 2025.
- **Financial Incentives:** Major incentives include exemption from purchase tax and VAT on EVs, free public parking and use of toll roads, and reduced annual taxes.
- **Consumer Preferences:** Research shows that low operating costs and access to free lanes are the biggest motivators for Norwegians to purchase EVs. Additionally, the declining price of EVs (down nearly 60% since 2008) has increased affordability.
- **Infrastructure Development:** Norway has invested heavily in charging infrastructure, with more than 6,600 public charging points across the country, including fast charging options. This addresses concerns about range anxiety, especially in a country with long distances and harsh winters.

Effect:

- **Reduced Emissions:** CO2 emissions from new cars in Norway fell by 29% between 2010 and 2015.
- **Consumer Satisfaction:** EV owners report high satisfaction levels (90%), indicating a positive user experience.
- **Economic Benefits:** Lower fuel costs and tax breaks make EVs an attractive option, contributing to a growing EV market.



Funded by
the European Uni

Key Takeaways:

Norway's success story shows that a combination of ambitious targets, financial incentives, infrastructure development and consumer-centric policies can significantly accelerate EV adoption. This case study offers valuable insights for other countries aiming to transition to a sustainable transportation future.

10.3.3 Case Study: Zurich, Switzerland - A Model for Sustainable Urban Mobility



Difficulty:

Many cities struggle with traffic congestion, air pollution and dependence on private vehicles. This can lead to reduced quality of life and environmental damage.



Funded by
the European Uni

Zurich's Vision:

The Swiss city of Zurich has taken a pioneering approach to urban mobility, aiming to become a "2000-watt society" by 2050. This ambitious target means significantly reducing energy consumption and CO2 emissions per capita.

Basic Strategies:

- **Integrated Public Transport:** Zurich has a world-class public transport network where trams, trolleybuses, buses and trains operate under one unified system. This ensures seamless connections, efficient scheduling and affordable fares.
- **High Frequency and Coverage:** The network offers frequent movements throughout the city, day and night. This high level of service encourages residents to rely on public transportation for all their travel needs.
- **Light Rail as Backbone:** Zurich's light rail system forms the core of the public transport network. Powered by renewable energy, this city offers high-capacity and low-carbon transportation.
- **Limited Car Dependence :** Zurich actively discourages car use with measures such as limited city center parking and integrated land use planning. New developments prioritize accessibility to walking, cycling and public transportation.
- **Resident Participation:** Public participation in city planning ensures that policies and regulations are aligned with the needs of residents. The downtown parking referendum exemplifies this commitment.



Funded by
the European Uni

Results:

- **Reduced Emissions:** Zurich has made significant progress towards its climate goals. Greenhouse gas emissions per capita have fallen and the city is on track to meet its 1 ton CO2 target.
- **High Public Transport Usage:** Zurich has one of the highest public transport usage rates in Europe. More than 44% of residents commute by public transportation, and car ownership remains low at 37%.
- **Improved Quality of Life:** Zurich consistently ranks high in global surveys for quality of life, thanks in part to its efficient and sustainable transportation system. Clean air, reduced noise and a pedestrian-friendly environment contribute to a more enjoyable urban experience.
- **Economic Benefits:** Easy access within the city attracts businesses and residents and further stimulates Zurich's economy. Less car use promotes healthier lifestyles and reduces healthcare costs.

Conclusion:

Zurich's success story demonstrates the power of integrated public transport, car reduction strategies and resident participation. This case study provides valuable insights for other cities aiming to create sustainable, healthy and livable urban environments .



Funded by
the European Uni



10.3.4 Case Study: Washington DC - A Model for Sustainable Urban





Funded by
the European Uni

Difficulty:

Washington DC, the bustling capital of the United States, faces challenges common to many major cities: traffic congestion, air pollution and dependence on private vehicles. These problems not only affect the environment, but also contribute to health problems and a decrease in quality of life.

Sustainable DC Plan:

In 2012, Washington DC launched a groundbreaking initiative called “Sustainable DC.” This comprehensive plan addresses four key areas vital to the city's prosperity: jobs and economy, health and wellbeing, equity and diversity, and climate and environment. In the climate and environment-focused approach, transportation emerged as a critical target area.

Ambitious Goals:

Sustainable DC aims for a significant change in the way residents travel within the city, setting clear transportation targets for 2032:

- Reduced Car Dependence: Car travel will drop to less than 25% of all trips.
- Improved Public Transport: Public transport ridership will increase to 50% of all trips.
- Active Travel Growth: Walking and cycling would account for 25% of all trips.

Action Plan and Achievements:

The sustainable DC plan wasn't just about lofty goals; It was supported by a detailed action plan outlining specific strategies. These included:

- **Investment in Public Transportation:** Improvements to bus lanes, expanded subway lines, and more frequent service would increase the reliability and convenience of public transportation.



Funded by
the European Uni



- **Promoting Bicycle Infrastructure:** Creating a network of protected bike lanes and promoting bike safety measures would encourage more residents to choose cycling for daily trips.
- **Improving Pedestrian Safety:** Making sidewalks safer and more accessible would encourage walking short distances.
- **Land Use Planning:** Developing walkable neighborhoods with easy access to basic services would reduce dependence on cars.

These efforts are bearing fruit. By 2016, Washington DC had achieved impressive results:

- **Best Ranking for Active Commuters:** Tied with Boston for the highest percentage of commuters who walk or bike to work in the US.
- **Significant Public Transportation Use:** Approximately 39% of residents commuted using public transportation, indicating a strong shift away from car dependency.
- **National Benchmark for Sustainability :** Washington DC has emerged as a national leader in sustainable transportation, encouraging other cities to pursue similar goals.

Conclusion:

Washington DC's success story highlights the effectiveness of setting clear goals, implementing a well-defined action plan, and prioritizing sustainable transportation solutions. By developing a more balanced transportation system, the city is leading other urban centers seeking a sustainable future while creating a healthier, more livable environment for its residents.



Funded by
the European Uni

10.3.5 Case Study: Swedish Railways – Pioneering Sustainable Travel



Focus: This case study looks at Swedish Railways' innovative approach to sustainable transport and attracting passengers in a climate-sensitive age.

Challenge: Transportation emissions pose a significant threat to the environment. Swedish Railways has recognized the urgency of addressing this challenge and has positioned itself as a leader in low-carbon mobility.

Innovation: Swedish Railways implements a two-pronged strategy:

- **Climate Neutral Operations:** The company prioritizes reducing its environmental footprint and achieving carbon neutrality.
- **Improved Passenger Experience:** Swedish Railways is taking steps to attract more passengers, especially those who prefer air travel.

Sustainability Initiatives: Swedish Railways demonstrates its commitment to the environment through various measures:



Funded by
the European Uni

- **Renewable Energy:** The company uses almost exclusively renewable energy sources (hydroelectricity and wind) to power its operations.
- **Emission Reduction Targets:** Swedish Railways has set ambitious targets to reduce greenhouse gas emissions: 30% by 2020 and 60–80% by 2050 compared to 1990 levels.
- **Circular Economy Applications:** Swedish Railways prioritizes resource efficiency as follows:
 - **Train Recycling:** The company has a 99% recycling rate for old trains, minimizing waste and environmental impact.
 - **Onboard Waste Management:** Waste separation practices and the use of compostable packaging on trains further encourage the circular economy approach.
- **Sustainable Supply Chain:** Swedish Railways ensures sustainability throughout the supply chain by holding its suppliers responsible for environmental practices.
- **Customer Education:** To encourage informed choices, Swedish Railways offers a greenhouse gas emissions calculator and environmental reports and highlights the positive environmental impact of choosing rail travel.
 - **Improving the Passenger Experience:** Swedish Railways recognizes the importance of a comfortable and attractive travel experience:
 - **Improved Sleeper Trains:** The **2008 renovation program focused on improved comfort and noise reduction in sleeping cars, making night train journeys more attractive.**



Funded by
the European Union

- **Convenient Connections:** The company offers direct connections from south to north within Sweden and on international routes.
- **Loyalty Programs:** Swedish Railways encourages frequent travelers to choose rail travel by rewarding them with a bonus program.
- **Cooperation with Tour Operators:** Swedish Railways cooperates with travel companies to promote rail travel, even for destinations up to 1,500 kilometers away. It also adjusts departure times to accommodate weekly charter changes in popular holiday destinations and accommodates passengers' needs.

Impact : Swedish Railways' commitment to sustainability and passenger experience has enabled:

- **Reduced Carbon Footprint:** Their efforts significantly contribute to reducing climate change through cleaner transportation options.
- **Industry Leadership:** Swedish Railways sets an example for other railway companies looking to adopt sustainable practices.
- **Increasing Number of Trips:** Their focus on passenger experience attracts passengers looking for a comfortable and environmentally friendly travel option.

Conclusion: Swedish Railways is a pioneer in sustainable travel. By prioritizing renewable energy, reducing emissions and providing an engaging passenger experience, it is paving the way for a greener future in the transport sector and encouraging passengers to choose environmentally friendly options.

10.3.6 Case Study: x Geo – Collaborative Innovation for Safer Roads in Norway



Funded by
the European Uni

131



© Geir Anders Rybakken Ørslie, City of Oslo.

Difficulty:

In 2006, a major storm near Trondheim caused significant disruptions to Norway's transportation infrastructure. This highlighted the urgent need for a system to proactively assess risks and prepare for extreme weather events.

Solution:

The Norwegian Public Roads Administration (NPRA) led an effort in collaboration with the Norwegian Water Resources and Energy Directorate (NVE), the National Railway Administration (JBV) and meteorological services. This collaboration resulted in the development of xGeo, an online risk assessment and preparedness tool.

Key Features of xGeo:

- **Integrated Data Platform:** xGeo integrates various data sources such as historical and real-time weather data, detailed road network maps, natural hazard thresholds and historical event records. This comprehensive approach allows for a more accurate assessment of potential risks.
- **Advanced Forecasting:** By analyzing historical data and current weather conditions, xGeo helps predict situations that could lead to transportation disruptions caused by floods, landslides and avalanches.
- **National Warning System :** The NVE forecast center leverages xGeo to issue timely warnings about avalanche and landslide risks. These alerts are



Funded by
the European Uni



communicated to road and rail authorities, relevant agencies and media outlets, facilitating a coordinated response.

- **Scalable for Wider Use:** Although currently used for national alerts, xGeo has the potential to be adopted by operations and maintenance contractors in the future. As the accuracy and user-friendliness of the tool continues to improve, its applications can be expanded.

Effect:

- **Enhanced Preparedness :** xGeo enables authorities to proactively prepare for extreme weather events, minimizing potential damage and disruptions to the transportation network.
- **Enhanced Public Safety:** Timely alerts delivered through xGeo enable authorities to take necessary action to protect public safety during hazardous weather conditions.
- **Collaboration as a Success Factor:** The xGeo case study exemplifies the value of collaboration between various stakeholders in infrastructure management. Working together, these institutions have developed a solution that strengthens Norway's transport resilience.

Conclusion:

xGeo serves as a model for developing innovative solutions through collaboration. It shows how integrated data analysis and proactive risk assessment can significantly increase preparedness and ensure the safety and efficiency of transportation infrastructure. This case study offers valuable insights for other countries seeking to increase their resilience to extreme weather events.



10.3.7 Case Study: Management in Nepal **Community-Based** **Flood**

Difficulty:

Floods are devastating communities across Nepal, especially in rural areas. Traditional flood management approaches were not sufficient.

Solution:

Nepal is pioneering a pluralistic approach to flood management by combining several strategies:

- **Community-Based Early Warning Systems (CBEWS):** Local residents are actively involved in monitoring, predicting and disseminating flood warnings, enabling timely evacuation.
- **Flash Flood Warning Systems :** These address the unique challenges of sudden onset flash floods.
- **Collaboration :** Community efforts work with government agencies such as the Department of Hydrology and Meteorology (DHM).
- **Policy Support:** Legal frameworks and initiatives promote early warning systems, community engagement, and risk reduction research.

Community Example: Badabaika Women

The 2008 floods displaced more than half of the village of Badabaika in Nepal's Kanchanpur district. But the community did not give up.

Building Stamina:

- **Support from Mercy Corps:** Mercy Corps, an NGO, has partnered with Badabaika to address gender barriers and establish a Community Disaster Management Committee (CDMC) with active participation of women.
- **Bamboo Spurs:** Realizing its effectiveness, Mercy Corps promoted bamboo spurs as a low-cost and environmentally friendly solution to strengthen river banks and reduce erosion.



Funded by
the European Union

- **Kans Grass for Income and Stability:** Women in Badabaika have planted kans grass, a natural erosion barrier that also provides income for the community. This revenue is used for spur maintenance and emergency preparedness.

Challenges and Overcoming:

- **COVID-19 :** When male residents left for job opportunities during pandemic, women like CDMC member Sukhira Rana mobilized the communities to protect and rebuild bamboo spurs.

- **Deterioration :** Bamboo spurs require annual maintenance due to natural deterioration.

Results :

- **Reduced Flood Risk :** The combined efforts of the community and Mercy Corps have significantly reduced Badabaika's flood risk.
- **Empowered Women :** The project empowered women to play a vital role in disaster risk reduction.
- **Sustainable Practices :** The use of bamboo and kansus promotes environmentally friendly solutions.

Conclusion:

Badabaika's story exemplifies the success of Nepal's community-based flood management approach.



- **11. DROUGHT AND WATER SHORTAGE**
- **11.3 Practical Tips for Drought and Water Scarcity:**
- **Individuals**
- **Be Smart with Water:** Every drop counts! Reduce shower times, fix leaky faucets, and turn off the tap while brushing your teeth.
- **Water Your Garden Wisely:** Water your lawn and plants in the early morning or evening to minimize evaporation. Use drought-tolerant plants and irrigation techniques such as drip irrigation.
- **Reuse and Recycle:** Collect rainwater in a barrel to use for watering plants.
Reuse greywater from laundry or showers for non-potable purposes if regulations allow.
- **Upgrade Fixtures:** Install low-flow shower heads and faucet aerators to reduce water use without compromising performance.
- **Spread Awareness:** Talk to your family, friends and neighbors about the importance of saving water and using water wisely. 11.4 Practical Tips for Drought and Water Scarcity: Municipalities
- **Public Awareness Campaigns:** Educate residents about water conservation measures and the effects of drought.
- **Water-Efficient Landscaping:** Promote xeriscaping and provide resources for residents to adopt water-saving practices in their yards.



Funded by
the European Uni

136



- Gray Water and Rainwater Harvesting: Develop guidelines and offer incentives for residents to install gray water recycling and rainwater harvesting systems.
- Sustainable Stormwater Management: Implement green infrastructure projects such as rain gardens and permeable pavements to capture and use rainwater.
- Water Supply Diversification: Explore alternative water sources such as recycled water, desalination or groundwater recharge.
- Water Demand Management: Implement tiered water pricing structures to encourage savings and identify leaks.
- Water-efficient building codes: Establish codes that require water-saving fixtures and appliances in new construction.
- Integrated Water Resource Management: Develop comprehensive water resource management plans that consider supply, demand, infrastructure and environmental needs.
- **Policy and Regulation** : Enact water conservation codes, water-efficient building codes, and regulations for rainwater harvesting.
- **Infrastructure Development** : Maintain and upgrade water distribution systems to minimize leaks. Invest in water reuse and recycling facilities.
- **Education and Community Outreach** : Collaborate with schools and community organizations to promote water conservation through educational programs and workshops.
- **Monitoring and Reporting**: Track water consumption, identify inefficiencies and measure the effectiveness of implemented measures. Use smart water management technologies for data collection.



Funded by
the European Union

- **Financial and Economic Incentives** : Offer reimbursements or grants for residents and businesses to adopt water-efficient practices and technologies.
- **Collaboration and Partnerships** : Work with other municipalities, water utilities, and stakeholders to share information, resources, and best practices. By following these tips, both individuals and municipalities can play an important role in conserving water, mitigating the effects of drought and ensuring a sustainable water future.

11.5 Case Study: Reducing Drought Risk in Northern China through Rural Land Use Management

- **Northern China's agricultural sector faces a double threat** : a warming climate leading to frequent droughts and water shortages. This disrupts crop production, jeopardizes food security and threatens the livelihoods of farmers in the region.
- **Location:** Inner Mongolia, a drought-prone region in northern China.
- **Solution:**
 - This study investigates the effectiveness of rural land use management strategies in reducing drought risk, ensuring food security and improving farmers' livelihoods. The research is based on in-depth interviews with local administrators and farming households.
- **Key Findings:**
 - **Reforestation of low-productivity agricultural lands** : Converting low-productivity agricultural lands into forests provides a two-fold benefit. It



Funded by
the European Uni



improves the overall ecological health of the region, and forests can help retain moisture in the soil, mitigating the effects of drought on remaining farmland.

(<http://wangjingai.bnu.edu.cn/PDFFiles/How%20adjustments%20in%20and%20use%20patterns%20contribute%20to%20drought%20risk%20adaptation%20in%20a%20changing%20climate%E2%80%94A%20case%20study%20in%20China.pdf>)

- **Switching to sprinkler irrigation:** Replacing traditional border irrigation methods, which can lead to significant water waste, with sprinkler irrigation systems significantly reduces water use in agriculture. This allows for more efficient water distribution and increases crop yield per unit of water used.

(<http://wangjingai.bnu.edu.cn/PDFFiles/How%20adjustments%20in%20and%20use%20patterns%20contribute%20to%20drought%20risk%20adaptation%20in%20a%20changing%20climate%E2%80%94A%20case%20study%20in%20China.pdf>)

- **Diversification with drought-tolerant crops :** Encouraging farmers to grow forage crops that require less water than traditional grain crops offers several advantages. It allows farmers to diversify their income by raising livestock.



Funded by
the European Uni



Reforestation of low-productivity agricultural lands



Switching to sprinkler irrigation





**Funded by
the European Uni**

140



Diversification with drought-resistant crops

Difficulty: Effect:

By implementing these land use management strategies, farmers in Inner Mongolia are not only reducing the risk of drought, they are also achieving:

- Improved ecological health
- Increased water efficiency in agriculture
- Diversified income sources
- Improved food safety

Implications for Decision Makers:

This case study provides valuable insights for policymakers and agricultural authorities across China, especially in drought-prone regions. It highlights the effectiveness of strategic rural land use management in adapting to climate change, reducing vulnerability to drought, and promoting sustainable agricultural practices that support farmers' livelihoods.



**Funded by
the European Uni**

Additional Considerations: Further research could examine:

- Long-term economic viability of alternative crops and livestock farming.
 - Feasibility and scalability of applying these strategies in different regions.
- Need for training and support programs to help farmers transition to new land management practices. Based on these findings and addressing these issues, policymakers and agricultural institutions can develop comprehensive strategies to reduce drought risk and ensure long-term food security for farmers in Northern China.





1. Case Study: Managing Water Scarcity in the Drought-Prone Mediterranean Region – A Multi-Criteria Approach

Difficulty:

The Tarragona region in northern Spain, a typical drought-prone area of the Mediterranean climate, faces a significant imbalance between water supply and demand. This challenge is predicted to worsen due to climate change. Effective water management strategies are crucial to ensure a sustainable future for the region.

Decision Making Context:

Water allocation planning in a region like Tarragona is a complex process that requires a holistic approach. Different sectors (domestic, industrial and agricultural) compete for water and multiple criteria need to be taken into account, including:

- Economic Cost: Financial impact of different water management solutions.
 - Water Stress: Impact on existing water resources.
- Environmental Impact: Potential ecological consequences of various strategies. Research Approach:

This case study investigates the application of a multi-criteria decision-making method called ELECTRE-III-H to evaluate water allocation policies in Tarragona. This method allows researchers to evaluate a variety of water management options based on a variety of indicators measured at different scales and with varying levels of uncertainty.



Scenarios and Strategies:

The study explores future water demand and supply scenarios, taking into account potential climate change impacts. It then considers various adaptation measures, including:

- **Alternative Water Sources:**
 - o Reuse of recycled water in industry and agriculture.
 - o Desalination for domestic and industrial use.
- Inter-Basin Water Transfer: Importing water from other basins.
- Sectoral Demand Management:
 - o Implementing water conservation measures in domestic, industrial and agricultural sectors.

Key Findings:

The study identified a combination of strategies as the most sustainable option for future water management in Tarragona:

- Moderate reuse of reclaimed water: This reduces the demand for freshwater in industry and agriculture while maintaining economic viability and minimizing environmental impact.
- **Low to moderate use of desalinated water:** Desalination can provide a safe source for domestic and some industrial needs, but its environmental impact must be carefully managed. • Focus on sectoral demand management:



Funded by
the European Uni

Promoting water conservation practices across all sectors reduces overall demand and reduces pressure on available resources.

Advantages of the Approach:

- **Holistic Decision Making:** ELECTRE-III-H enables comprehensive evaluation of water management options, taking into account economic, social and environmental factors.
- **Flexibility:** The method can adapt to different measurement scales and accommodate uncertainty in decision maker preferences.

Forward:

- **Implementation and Monitoring:** Established strategies need to be implemented and their effectiveness monitored to ensure they meet sustainability goals.
- **Adaptability:** The water management plan should be regularly reviewed and updated to reflect changing conditions, such as changing climate projections and technological advances .

Source:

- Kumar, V., Del Vasto-Terrientes, L., Valls, A. and Schuhmacher, M. (2015). *Adaptation strategies for water management in a drought-prone supply Mediterranean river basin: of the exclusion method. Total Application Environmental* 524-525, 1-11. *Science*, <https://doi.org/10.1016/j.scitotenv.2015.06.062>



**Funded by
the European Uni**



Additional Notes:

This case study highlights the importance of a multi-criteria approach to water management in drought-prone regions. By considering a variety of factors and using sound decision-making tools, communities can ensure sustainable water allocation and secure water resources for the future.



SUSTAINABLE ENERGY EFFICIENCY ADAPTATION ACTIONS FOR MUNICIPALITIES

Sustainable Energy Efficiency: Individual and Municipal Actions

Below is a breakdown of practical tips for sustainable energy efficiency at both individual and municipal levels:

12.1.1 Individual Actions:

12.1.1.1 Reduce Energy Consumption:

- Turn off lights and electronic devices when not in use and use Energy-saving appliances and light bulbs.



- Whenever possible, wash your laundry in cold water and dry it outdoors.
Lower your thermostat in the winter and raise it in the summer.





Funded by
the European Uni

147



- o Shorten shower times and use efficient cooking methods.



- o Consider alternative transportation options such as biking, walking or carpooling.

o

12.1.1.2 Pay Attention to Energy Use:

- Unplug chargers and electronic devices that are not in use (they still draw phantom power).
- Maintain devices for best efficiency.
- Seal air leaks around windows and doors.





Funded by
the European Uni

148



o Invest in programmable thermostats.



o Explore renewable energy options such as rooftop solar panels (if available).



- **12.1.1.3 Educate Yourself and Others:**

- Learn about sustainable energy practices.
- Share tips and encourage others to adopt sustainable habits.

- **12.1.2 Municipal Actions:**

- **12.1.2.1 Building Efficiency:**

- Enact and enforce building codes that encourage energy efficient design in new and existing buildings.
- Offer incentives (rebates, tax credits) for energy-efficient upgrades like insulation, windows, and appliances.



Funded by
the European Uni



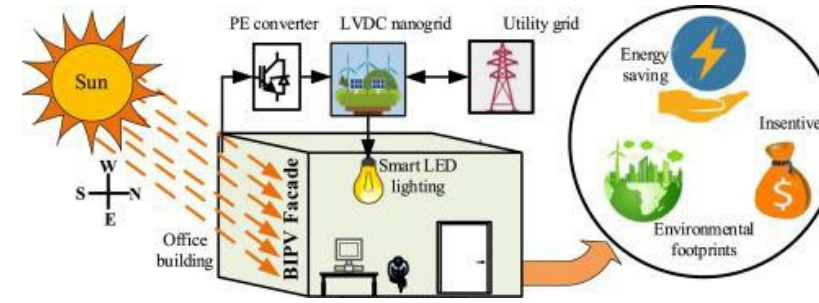
- o Invest in energy efficient public buildings with LED lighting, smart thermostats and renewable energy systems.





Funded by
the European Uni

150



1. Renewable Energy Integration:

- o Invest in renewable energy sources such as solar, wind, geothermal or biomass for municipal facilities.
- o Partner with developers on community solar projects that residents can participate in.
- o Streamline permitting processes for renewable energy facilities .

2. Sustainable Transportation:

- o Expand and improve public transport networks.
- o Develop infrastructure for cycling and walking (dedicated lanes, safe intersections).
- o Promote electric vehicles through charging stations and purchase incentives.

12.1.2.4 Urban Planning and Design:

- o Promote compact development models with walkable, mixed-use communities.



**Funded by
the European Uni**

151

- o Invest in green infrastructure such as parks, green roofs and urban forests to reduce the heat island effect.

- o Design and build infrastructure that is resilient to climate change impacts.

12.1.2.5 Community Engagement and Education:

- o Educate residents and businesses about energy efficiency and climate change. o Deliver workshops, outreach programs and awareness campaigns.

- o Encourage residents to participate in decision-making and climate action.

Remember, both individual and municipal efforts are crucial to a sustainable energy future. By working together, we can reduce our environmental impact and build a more resilient future.





12.2 Case Study: City of Copenhagen, Denmark

The city of Copenhagen has emerged as a global leader in sustainable energy efficiency and climate change adaptation. Through a combination of innovative policies, strategic planning and community engagement, Copenhagen has made significant progress in reducing energy consumption, lowering greenhouse gas emissions and increasing its resilience to climate change impacts.



Figure X. Large-scale solar district heating plants in the Danish smart thermal grid.

12.2.1 District Heating and Cogeneration:

Copenhagen has a well-established district heating system that provides heat to buildings across the city. This system maximizes energy efficiency by using waste heat from power generation and industrial processes. By connecting buildings to a central heating network, the city has significantly reduced individual energy consumption and lowered carbon emissions.



**Funded by
the European Uni**



12.2.2 Energy Efficient Buildings:

Copenhagen has implemented strict building codes and standards to ensure energy efficiency in new construction. The city promotes passive building design that optimizes insulation, ventilation and solar gain to minimize energy needs. Additionally, Copenhagen encourages the use of energy-efficient appliances and lighting systems and the adoption of renewable energy sources such as solar panels and geothermal heat pumps.

Sustainable Transportation:

Copenhagen has invested heavily in sustainable transport infrastructure, promoting cycling, walking and public transport as alternatives to private car use. The city has developed an extensive network of bicycle paths, pedestrian zones and efficient public transport systems. These measures not only reduce greenhouse gas emissions, but also contribute to improving air quality and public health.



12.2.3 Renewable Energy Integration:

Copenhagen has set ambitious renewable energy targets and made significant progress in integrating renewable energy sources into the energy mix. The city has invested in both onshore and offshore wind farms to utilize the abundant wind resources in the region. Additionally, Copenhagen encourages the installation of solar panels on roofs and uses biomass for heat and power production.



Figure X. Renewable Energy Integration in Copenhagen

12.2.4 Climate Resilience Planning:

To adapt to the adverse effects of climate change, Copenhagen has developed comprehensive climate resilience plans. These plans include strategies to manage the increased risk of flooding, heatwaves and extreme weather events. The city has implemented green infrastructure solutions such as green roofs, rain gardens, and permeable surfaces to improve stormwater management and reduce the urban heat island effect.



Funded by
the European Uni



Figure X. A nearly zero-energy building in Denmark

12.2.5 Community Engagement and Partnerships:

Copenhagen is actively engaging its residents, businesses, and community organizations in energy efficiency initiatives and climate change adaptation efforts. The city organizes awareness campaigns, workshops and training programs to promote sustainable practices and encourage behavior change. Copenhagen also collaborates with research institutions, private sector organizations and other cities to share best practices and foster innovation.

12.2.6 Results and Effects:

Copenhagen's sustainable energy efficiency adaptation and implementation actions have yielded significant results:

The city has exceeded its targets by achieving a significant reduction in greenhouse gas emissions, becoming one of the most carbon neutral cities in the world.



**Funded by
the European Uni**

Per capita energy consumption has decreased thanks to energy efficient buildings, district heating systems and sustainable transportation options.

Copenhagen's quality of life has improved with cleaner air, reduced traffic congestion and improved public spaces.

12.2.7 Conclusion:

The Copenhagen case study exemplifies how a city can effectively adapt and implement sustainable energy efficiency measures to combat the adverse effects of climate change. By focusing on district heating, energy-efficient buildings, sustainable transport, renewable energy integration, climate resilience planning and community participation, Copenhagen has become a global model for sustainable urban development. The city's success demonstrates that a comprehensive and collaborative approach is required to achieve long-term sustainability and resilience in the face of climate change.





Funded by
the European Union



**DİNLEDİĞİNİZ İÇİN TEŞEKKÜRLER!
THANK YOU FOR YOUR ATTENTION!**